

Product datasheet for **CS638663**

Frozen Tissue Sections, Lymphoid tissue

Product data:

Product Type:	Frozen Sections
Disease State:	Cancer
Diagnosis Category:	Lymphoma
Tissue:	Lymphoid tissue
Frozen Sample ID:	FR0002C4EB
Case ID:	CU0000011432
Tissue of Origin:	Lymphoid tissue
Site of Finding:	Spleen
Appearance:	Tumor
Sample Diagnosis (from Pathology Verification):	Lymphoma, marginal zone B-cell, splenic
Normal:	80%
Lesional:	0%
Tumor:	20%
Tumor Hypo/Acellular Stroma:	0%
Tumor Hypercellular Stroma:	0%
Necrosis:	0%
Pathology Verification notes from H&E review:	Non Tumor Structures: 90% Red pulp, 10% White pulp
CASE Diagnosis (from medical center path report):	Lymphoma, marginal zone B-cell, splenic
Age:	45
Gender:	Male
Tumor Grade:	Not Reported



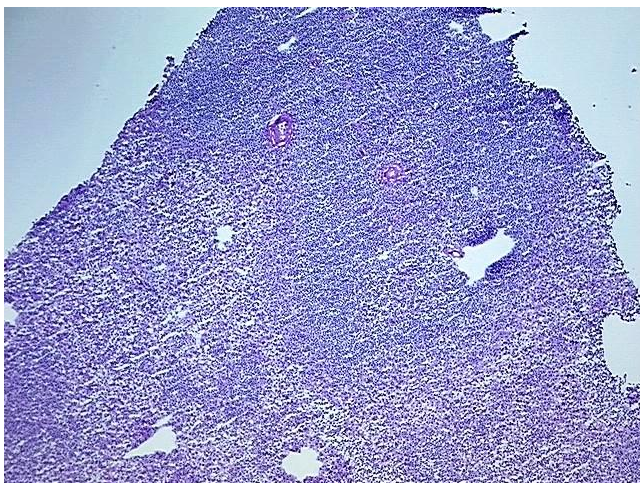
[View online »](#)

Minimum Stage
Grouping: IE

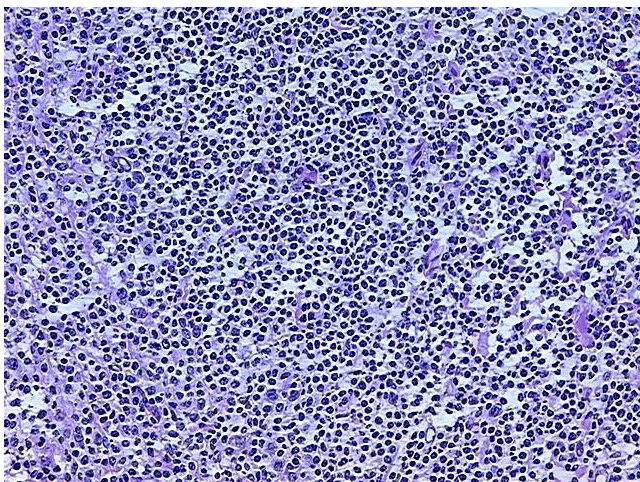
Storage: Store frozen tissue sections at -80°C.

Stability: All frozen tissue sections are stable for 1 year from date of purchase if stored at -80°C without repeated freeze/thaws.

Product images:



4x Image



20x Image