

Product datasheet for CS638296

Frozen Tissue Sections, Bone: femur, lateral

Product data:

Product Type:	Frozen Sections
Disease State:	Normal
Diagnosis Category:	Normal
Tissue:	Bone
Frozen Sample ID:	FR760469D8
Case ID:	CU0000011194
Tissue of Origin:	Bone: femur, lateral
Site of Finding:	Bone: femur, lateral
Appearance:	R
Sample Diagnosis (from Pathology Verification):	Within normal limits
Normal:	100%
Lesional:	0%
Tumor:	0%
Tumor Hypo/Acellular Stroma:	0%
Tumor Hypercellular Stroma:	0%
Necrosis:	0%
Pathology Verification notes from H&E review:	Non Tumor Structures: 30% Bone, 70% fatty marrow; Other Features/Comments: Because this tissue sample was snap-frozen, the pathology verification data and the associated images were derived from an adjacent formalin-fixed paraffin embedded sample.
CASE Diagnosis (from medical center path report):	Atherosclerosis
Age:	78
Gender:	Male

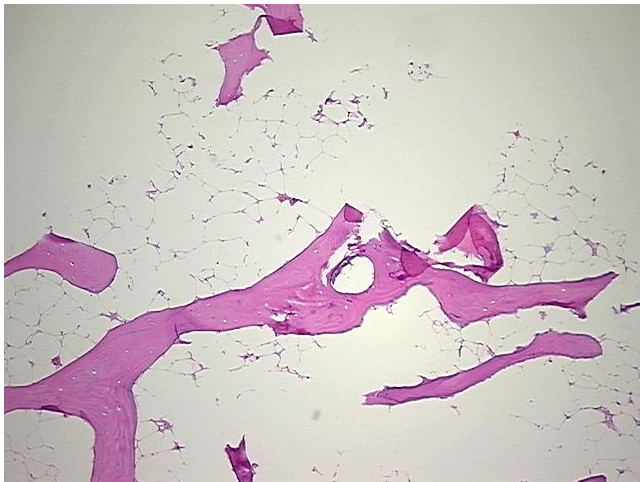


[View online »](#)

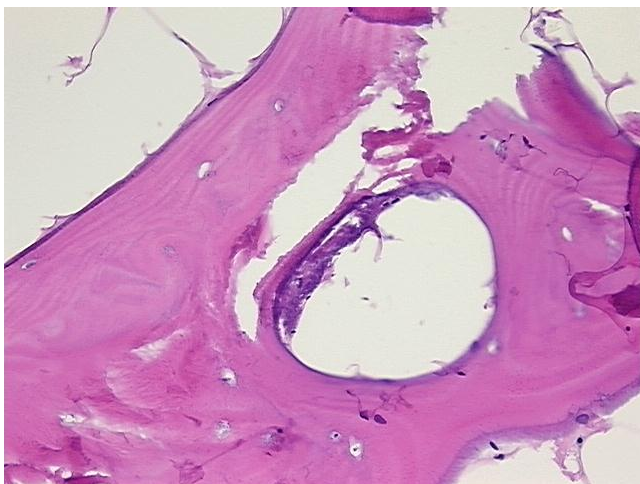
Storage: Store frozen tissue sections at -80°C.

Stability: All frozen tissue sections are stable for 1 year from date of purchase if stored at -80°C without repeated freeze/thaws.

Product images:



4x Image



20x Image