

Product datasheet for CS638149

Frozen Tissue Sections, Brain

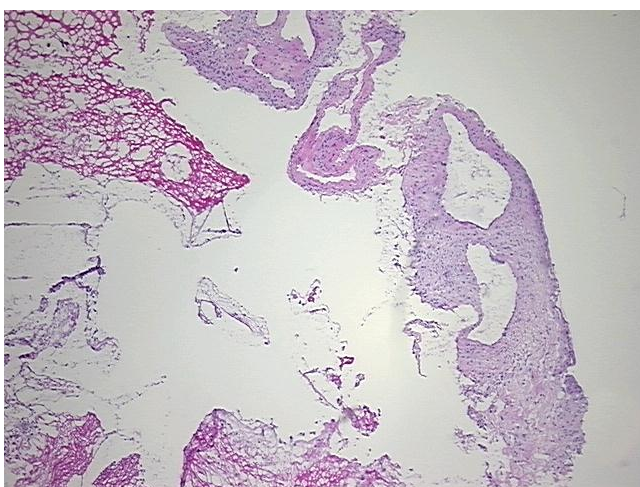
Product data:

Product Type:	Frozen Sections
Disease State:	Other Disease
Diagnosis Category:	Meningioma
Tissue:	Brain
Frozen Sample ID:	FR00032BB6
Case ID:	CU0000011184
Tissue of Origin:	Brain
Site of Finding:	Brain
Appearance:	T
Sample Diagnosis (from Pathology Verification):	Meningioma
Normal:	0%
Lesional:	80%
Tumor:	5%
Tumor Hypo/Acellular Stroma:	0%
Tumor Hypercellular Stroma:	10%
Necrosis:	5%
Pathology Verification notes from H&E review:	Lesion (80%): Aneurysm of cerebral artery 20%, Thrombus of vessel 80%
CASE Diagnosis (from medical center path report):	Meningioma
Age:	78
Gender:	Female
Tumor Grade:	Not Reported

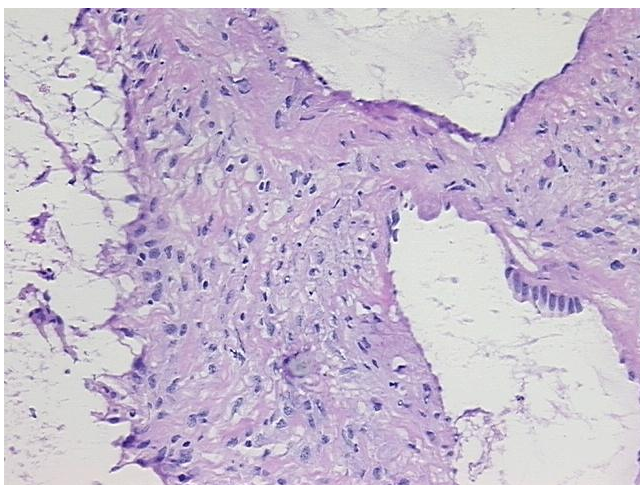


[View online »](#)

Minimum Stage Grouping:	Not Reported
T (Extent of Primary Tumor):	Not Reported
N (Lymph node metastasis):	Not Reported
M (Distant metastasis):	Not Reported
Storage:	Store frozen tissue sections at -80°C.
Stability:	All frozen tissue sections are stable for 1 year from date of purchase if stored at -80°C without repeated freeze/thaws.

Product images:

4x Image



20x Image