

## Product datasheet for **CS638046**

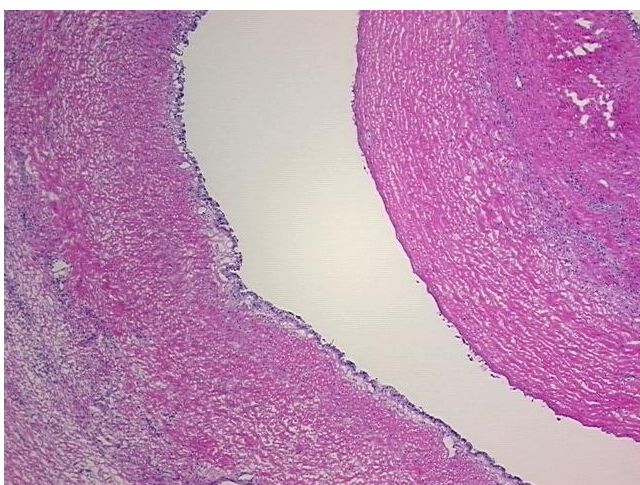
### Frozen Tissue Sections, Ovary

#### Product data:

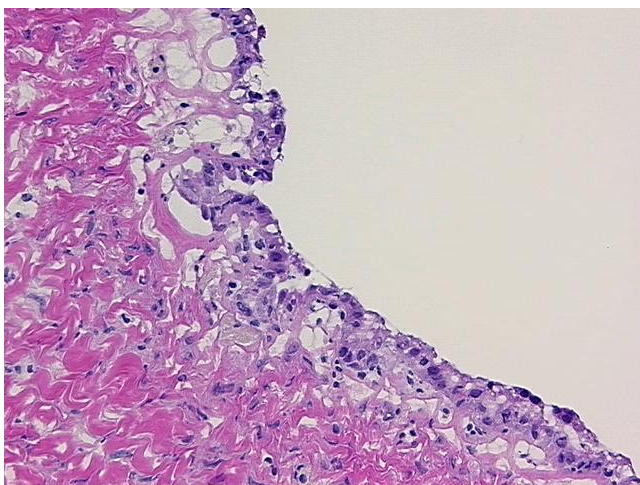
Product Type:	Frozen Sections
Disease State:	Other Disease
Diagnosis Category:	Borderline Ovarian Tumor
Tissue:	Ovary
Frozen Sample ID:	FR00032AFA
Case ID:	CU0000011178
Tissue of Origin:	Ovary
Site of Finding:	Ovary
Appearance:	T
Sample Diagnosis (from Pathology Verification):	Tumor of ovary, borderline
Normal:	70%
Lesional:	0%
Tumor:	10%
Tumor Hypo/Acellular Stroma:	19%
Tumor Hypercellular Stroma:	1%
Necrosis:	0%
Pathology Verification notes from H&E review:	cellular tumor stroma: 100% desmoplasia; hypo/acellular stroma: 100% fibrosis; normal: 40% ovarian stroma, 60% hilar vessels
CASE Diagnosis (from medical center path report):	Tumor of ovary, borderline
Age:	43
Gender:	Female
Tumor Grade:	Not Reported


[View online »](#)

Minimum Stage Grouping:	IB
T (Extent of Primary Tumor):	T1b
N (Lymph node metastasis):	N0
M (Distant metastasis):	MX
Storage:	Store frozen tissue sections at -80°C.
Stability:	All frozen tissue sections are stable for 1 year from date of purchase if stored at -80°C without repeated freeze/thaws.

**Product images:**


4x Image



20x Image