

## Product datasheet for **CS637984**

### Frozen Tissue Sections, Lymphoid tissue

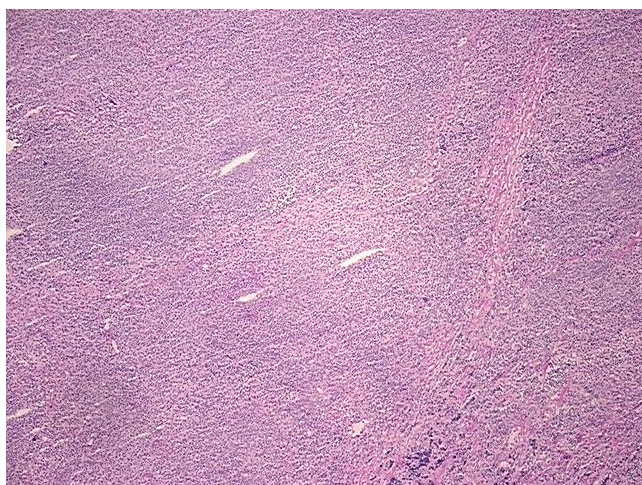
#### Product data:

Product Type:	Frozen Sections
Disease State:	Cancer
Diagnosis Category:	Lymphoma
Tissue:	Lymphoid tissue
Frozen Sample ID:	FR00032A5B
Case ID:	CU0000011174
Tissue of Origin:	Lymphoid tissue
Site of Finding:	Lymph node
Appearance:	T
Sample Diagnosis (from Pathology Verification):	Lymphoma, follicular
Normal:	67%
Lesional:	0%
Tumor:	33%
Tumor Hypo/Acellular Stroma:	0%
Tumor Hypercellular Stroma:	0%
Necrosis:	0%
Pathology Verification notes from H&E review:	Effaced lymph node with 33% clonal B cells by flow cytometry; normal: lymphocytes
CASE Diagnosis (from medical center path report):	Lymphoma, follicular
Age:	58
Gender:	Male
Tumor Grade:	Not Reported

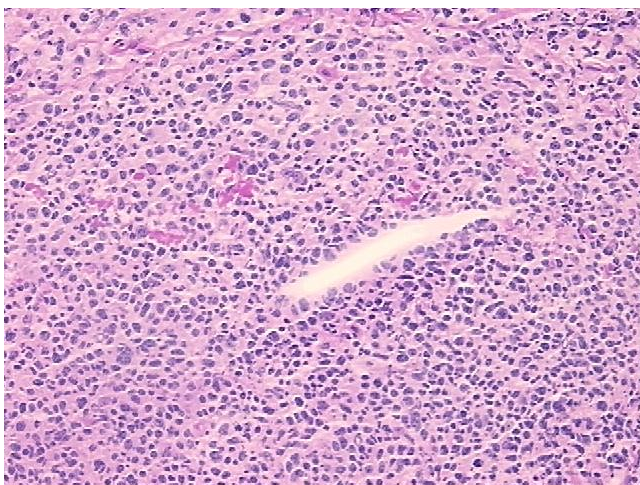


[View online »](#)

Minimum Stage Grouping:	I
T (Extent of Primary Tumor):	Not applicable
N (Lymph node metastasis):	Not applicable
M (Distant metastasis):	Not applicable
Diagnostic Test Results:	FMC7 antigen ! by IHC,Negative; CD19 ~ B4 ~ Leu12 ! by IHC,Positive; CD5 ~ Leu1 ! by IHC,Negative; CD45 ~ Leukocyte common antigen ! by IHC,Positive; CD38 ~ Leu17 ~ T16 ! by IHC,Positive; CD10 ~ CALLA ~ Common ALL antigen ! by IHC,Positive
Storage:	Store frozen tissue sections at -80°C.
Stability:	All frozen tissue sections are stable for 1 year from date of purchase if stored at -80°C without repeated freeze/thaws.

**Product images:**

4x Image



20x Image