

## Product datasheet for **CS637963**

### Frozen Tissue Sections, Skin

#### Product data:

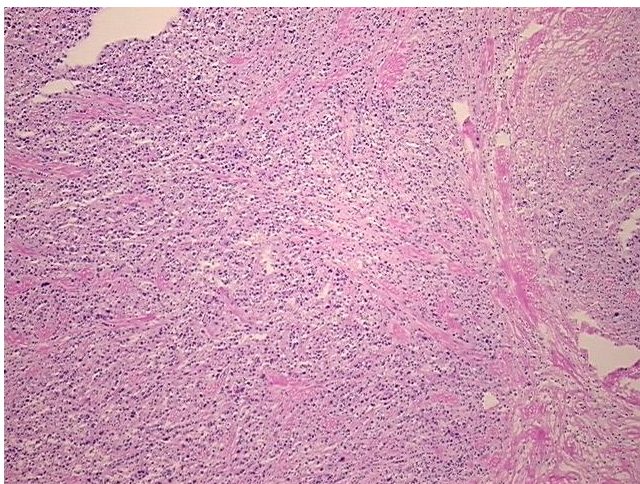
Product Type:	Frozen Sections
Disease State:	Cancer
Diagnosis Category:	Melanoma
Tissue:	Skin
Frozen Sample ID:	FR00032A49
Case ID:	CU0000011172
Tissue of Origin:	Skin
Site of Finding:	Neck
Appearance:	T
Sample Diagnosis (from Pathology Verification):	Malignant melanoma, metastatic
Normal:	0%
Lesional:	0%
Tumor:	70%
Tumor Hypo/Acellular Stroma:	0%
Tumor Hypercellular Stroma:	30%
Necrosis:	0%
CASE Diagnosis (from medical center path report):	Malignant melanoma, metastatic
Age:	72
Gender:	Female
Tumor Grade:	Not Reported
Minimum Stage Grouping:	IIIB



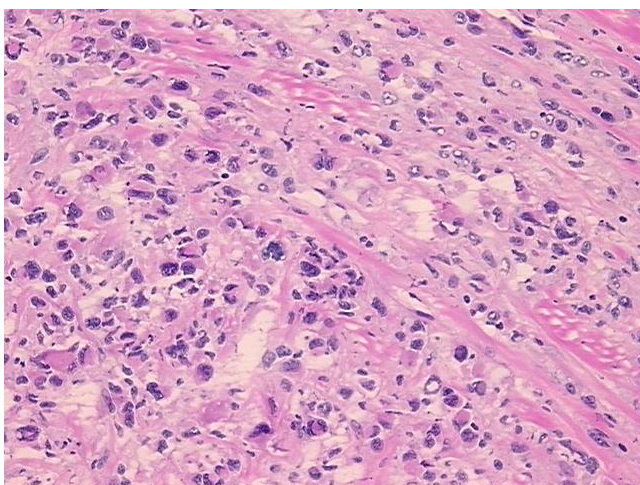
[View online »](#)

T (Extent of Primary Tumor):	TX
N (Lymph node metastasis):	N1b
M (Distant metastasis):	MX
Diagnostic Test Results:	MART-1 ~ Melanoma Marker ~ Melan-A,Positive; S100 protein,Equivocal; HMB45 melanoma antigen ~ GP100 ! by IHC,Positive; CD45 ~ Leukocyte common antigen ! by IHC,Negative; Cytokeratin CAM5.2 ~ CAM5.2 ! by IHC,Negative; Cytokeratin AE1/AE3 ~ AE1/
Storage:	Store frozen tissue sections at -80°C.
Stability:	All frozen tissue sections are stable for 1 year from date of purchase if stored at -80°C without repeated freeze/thaws.

### Product images:



4x Image



20x Image