

Product datasheet for **CS637808**

Frozen Tissue Sections, Unknown tissue consistent with skin

Product data:

| | |
|---|--|
| Product Type: | Frozen Sections |
| Disease State: | Cancer |
| Diagnosis Category: | Melanoma |
| Tissue: | Skin |
| Frozen Sample ID: | FR000313BD |
| Case ID: | CU0000011153 |
| Tissue of Origin: | Unknown tissue consistent with skin |
| Site of Finding: | Lymph node |
| Appearance: | T |
| Sample Diagnosis (from Pathology Verification): | Malignant melanoma, metastatic, consistent with skin primary |
| Normal: | 40% |
| Lesional: | 0% |
| Tumor: | 15% |
| Tumor Hypo/Acellular Stroma: | 0% |
| Tumor Hypercellular Stroma: | 45% |
| Necrosis: | 0% |
| CASE Diagnosis (from medical center path report): | Malignant melanoma, metastatic |
| Age: | 47 |
| Gender: | Male |
| Tumor Grade: | Not Reported |
| Minimum Stage Grouping: | IIIB |



[View online »](#)

T (Extent of Primary Tumor): TX

N (Lymph node metastasis): N1b

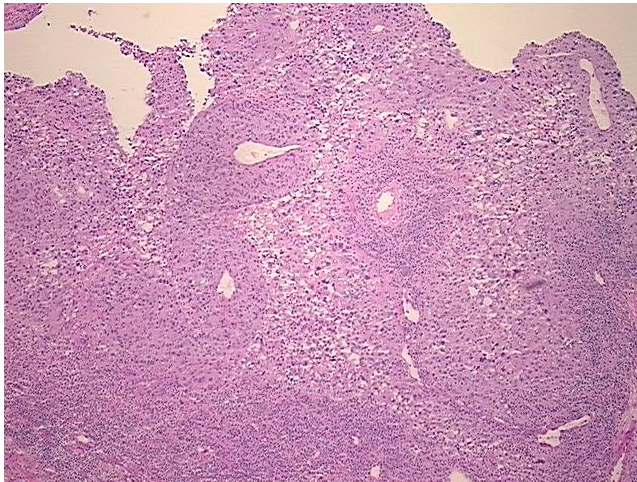
M (Distant metastasis): MX

Diagnostic Test Results: Cytokeratins (5 and 6) ~ CK5,6 ! by IHC,Positive, focal; MART-1 ~ Melanoma Marker ~ Melan-A,Positive; S100 protein,Positive; HMB45 melanoma antigen ~ GP100 ! by IHC,Positive, focal; Cytokeratin 7 ~ CK7 ! by IHC,Positive, focal; Cytokeratin 20 ~

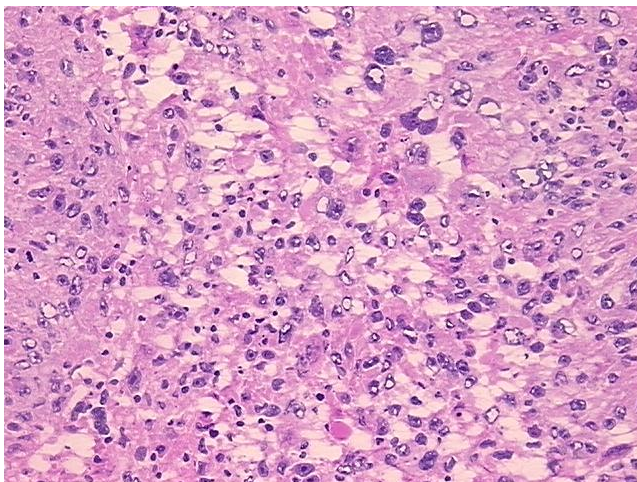
Storage: Store frozen tissue sections at -80°C.

Stability: All frozen tissue sections are stable for 1 year from date of purchase if stored at -80°C without repeated freeze/thaws.

Product images:



4x Image



20x Image