

Product datasheet for **CS637671**

Frozen Tissue Sections, Breast, right

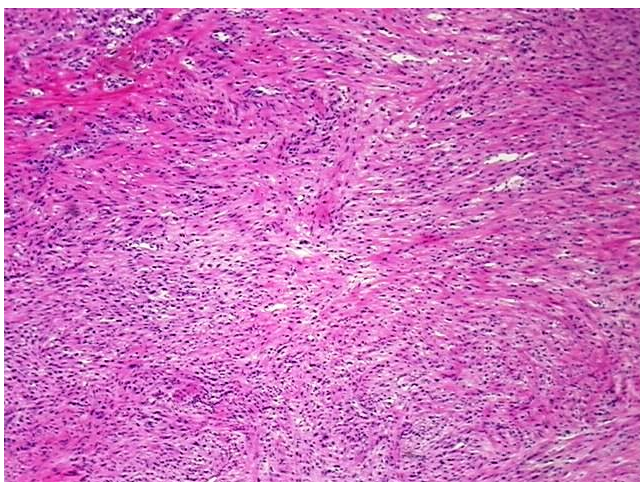
Product data:

Product Type:	Frozen Sections
Disease State:	Cancer
Diagnosis Category:	Breast Cancer
Tissue:	Breast
Frozen Sample ID:	FR5B34061A
Case ID:	CU0000011142
Tissue of Origin:	Breast, right
Site of Finding:	Breast, right
Appearance:	Tumor
Sample Diagnosis (from Pathology Verification):	Adenocarcinoma of breast
Normal:	0%
Lesional:	0%
Tumor:	40%
Tumor Hypo/Acellular Stroma:	0%
Tumor Hypercellular Stroma:	60%
Necrosis:	0%
Pathology Verification notes from H&E review:	Tumor: The tumor exhibits extensive spindle cell metaplasia and foci of chondro-osseous metaplasia. Other areas of the tumor exhibit features of common infiltrating ductal carcinoma; Tumor Stroma (Cellular): surrounding dense breast parenchyma
CASE Diagnosis (from medical center path report):	Adenocarcinoma of breast
Age:	52
Gender:	Female

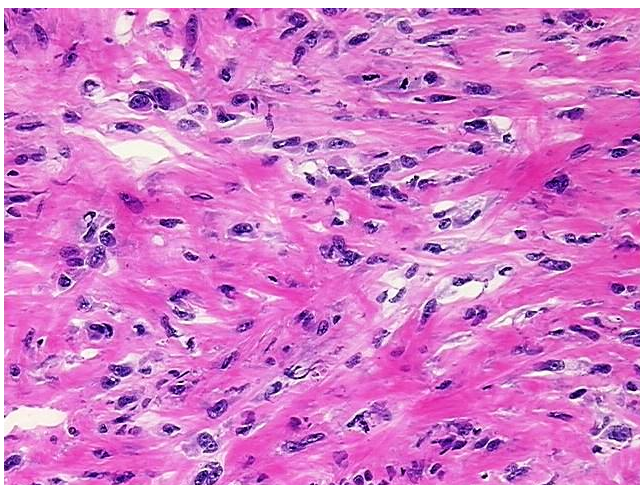


[View online »](#)

Tumor Grade:	Nottingham G3: 8-9 points High combined grade (unfavorable)
Minimum Stage Grouping:	IIIC
T (Extent of Primary Tumor):	pT3
N (Lymph node metastasis):	pN3a
M (Distant metastasis):	pMX
Storage:	Store frozen tissue sections at -80°C.
Stability:	All frozen tissue sections are stable for 1 year from date of purchase if stored at -80°C without repeated freeze/thaws.

Product images:

4x Image



20x Image