

Product datasheet for **CS637313**

Frozen Tissue Sections, Endometriotic tissue

Product data:

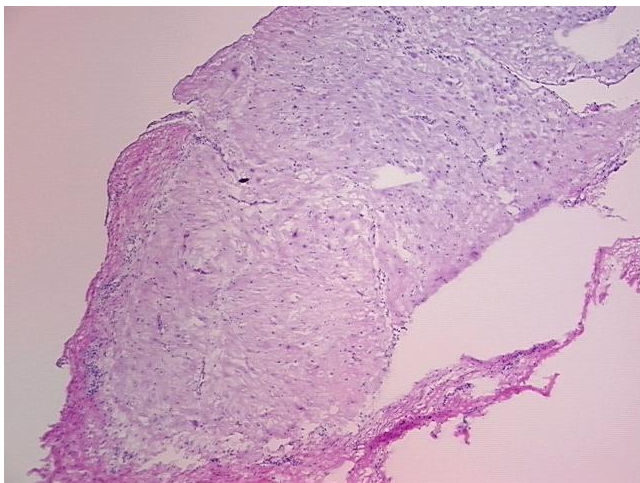
Product Type:	Frozen Sections
Disease State:	Other Disease
Diagnosis Category:	Endometriosis
Tissue:	Endometriotic tissue
Frozen Sample ID:	FR0002E0B2
Case ID:	CU0000011120
Tissue of Origin:	Endometriotic tissue
Site of Finding:	Soft tissue
Appearance:	L
Sample Diagnosis (from Pathology Verification):	Endometriosis
Normal:	90%
Lesional:	10%
Tumor:	0%
Tumor Hypo/Acellular Stroma:	0%
Tumor Hypercellular Stroma:	0%
Necrosis:	0%
Pathology Verification notes from H&E review:	lesion: endometriosis with pregnancy effect (decidual change), 99% decidua, 1% stroma; normal: 40% skeletal muscle, 60% fibroadipose tissue
CASE Diagnosis (from medical center path report):	Endometriosis
Age:	37
Gender:	Female
Storage:	Store frozen tissue sections at -80°C.



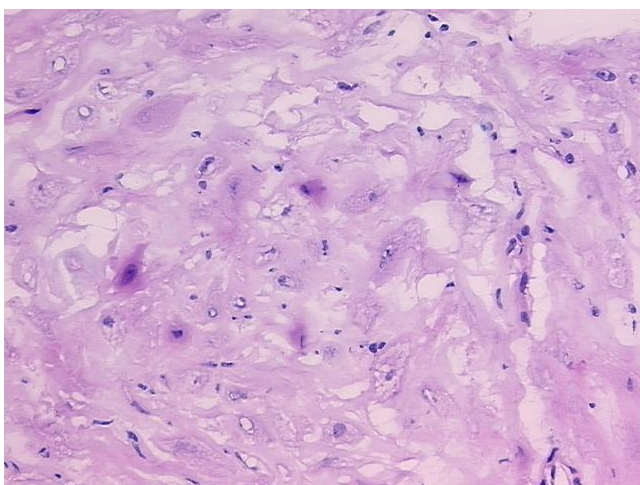
[View online »](#)

Stability: All frozen tissue sections are stable for 1 year from date of purchase if stored at -80°C without repeated freeze/thaws.

Product images:



4x Image



20x Image