

Product datasheet for **CS637262**

Frozen Tissue Sections, Stomach

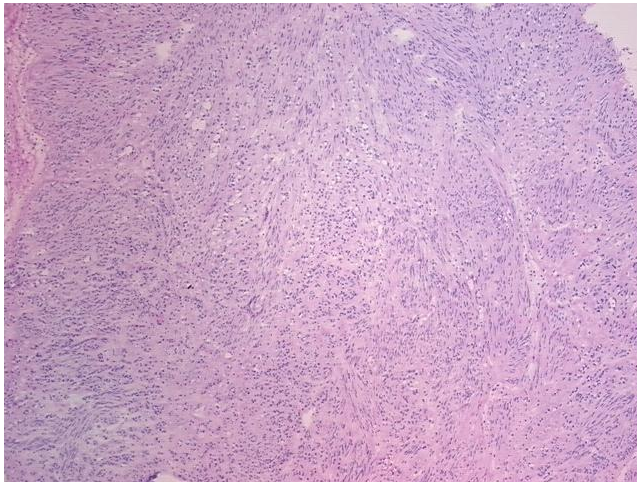
Product data:

Product Type:	Frozen Sections
Disease State:	Other Disease
Diagnosis Category:	Gastrointestinal Stromal Tumor (GIST)
Tissue:	Stomach
Frozen Sample ID:	FR0002E089
Case ID:	CU0000011118
Tissue of Origin:	Stomach
Site of Finding:	Stomach
Appearance:	T
Sample Diagnosis (from Pathology Verification):	Gastrointestinal stromal tumor of stomach
Normal:	0%
Lesional:	0%
Tumor:	55%
Tumor Hypo/Acellular Stroma:	25%
Tumor Hypercellular Stroma:	0%
Necrosis:	20%
CASE Diagnosis (from medical center path report):	Gastrointestinal stromal tumor of stomach
Age:	87
Gender:	Female
Tumor Grade:	Not Reported
Minimum Stage Grouping:	Not Reported

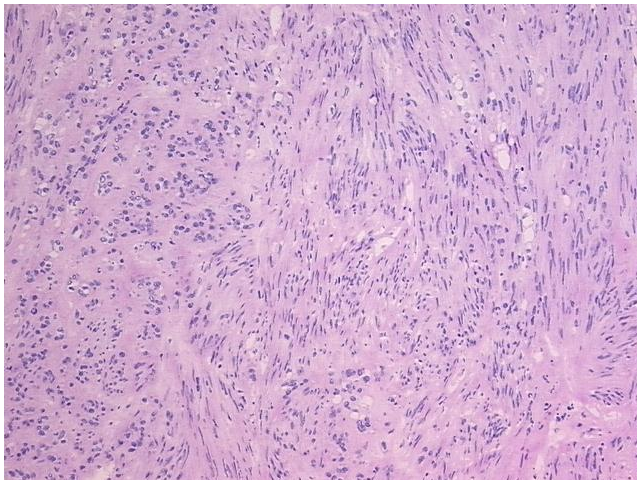

[View online »](#)

T (Extent of Primary Tumor):	Not Reported
N (Lymph node metastasis):	Not Reported
M (Distant metastasis):	Not Reported
Diagnostic Test Results:	Trichrome - Masson stain,Fibrosis; Reticulin stain,Fibrosis; Iron stain, Perls ~ Iron stain, Prussian blue,Reported as Performed or Reviewed; Vimentin ~ VIM ! by IHC,Positive; S100 protein,Negative; Desmin ! by IHC,Negative; CD34 ~ HPCA ! by IHC,Pos
Storage:	Store frozen tissue sections at -80°C.
Stability:	All frozen tissue sections are stable for 1 year from date of purchase if stored at -80°C without repeated freeze/thaws.

Product images:



4x Image



20x Image