

## Product datasheet for **CS636976**

### Frozen Tissue Sections, Stomach

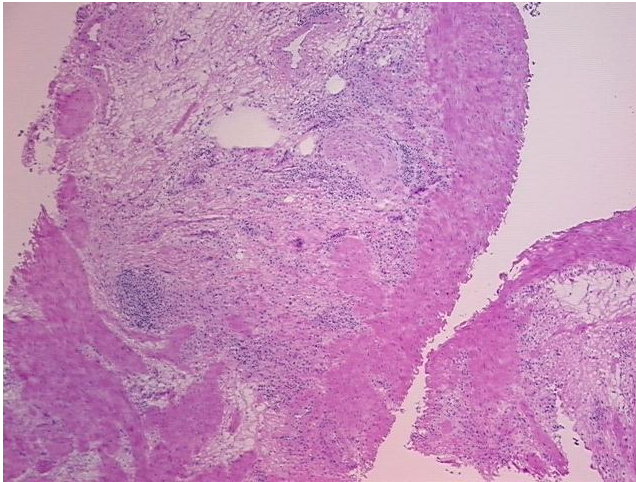
#### Product data:

Product Type:	Frozen Sections
Disease State:	Cancer
Diagnosis Category:	Stomach Cancer
Tissue:	Stomach
Frozen Sample ID:	FR5B34021C
Case ID:	CU0000011095
Tissue of Origin:	Stomach
Site of Finding:	Stomach
Appearance:	T
Sample Diagnosis (from Pathology Verification):	Adenocarcinoma of stomach, signet ring cell
Normal:	0%
Lesional:	60%
Tumor:	10%
Tumor Hypo/Acellular Stroma:	30%
Tumor Hypercellular Stroma:	0%
Necrosis:	0%
Pathology Verification notes from H&E review:	lesion: chronic gastritis
CASE Diagnosis (from medical center path report):	Adenocarcinoma of stomach, signet ring cell
Age:	52
Gender:	Female
Tumor Grade:	AJCC G3: Poorly differentiated

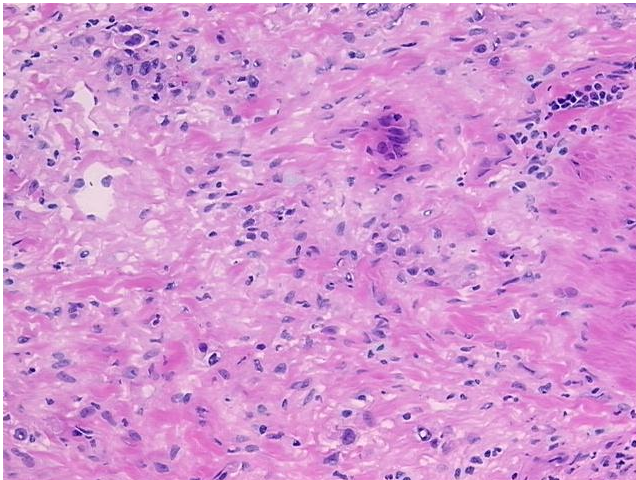


[View online »](#)

Minimum Stage Grouping:	II
T (Extent of Primary Tumor):	T2
N (Lymph node metastasis):	N1
M (Distant metastasis):	MX
Diagnostic Test Results:	Cytokeratin AE1/AE3 ~ AE1/AE3 ! by IHC, Reported as Performed or Reviewed
Storage:	Store frozen tissue sections at -80°C.
Stability:	All frozen tissue sections are stable for 1 year from date of purchase if stored at -80°C without repeated freeze/thaws.

**Product images:**

4x Image



20x Image