

## Product datasheet for **CS636181**

### Frozen Tissue Sections, Ileum

#### Product data:

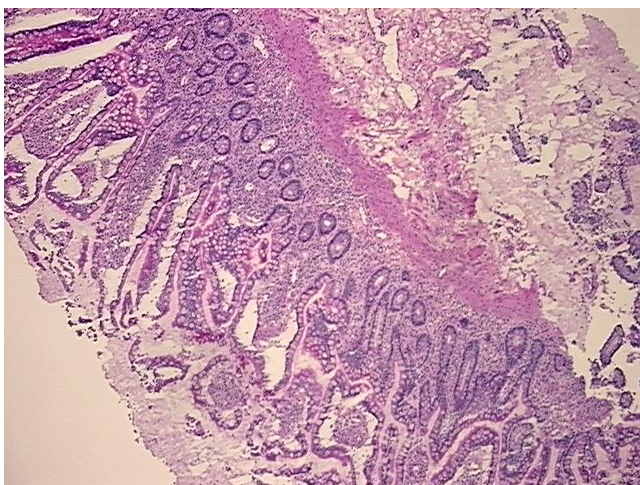
Product Type:	Frozen Sections
Disease State:	Other Disease
Diagnosis Category:	Inflammatory Bowel Disease (IBD)
Tissue:	Small intestine
Frozen Sample ID:	FR0002D49C
Case ID:	CU0000011014
Tissue of Origin:	Ileum
Site of Finding:	Ileum
Appearance:	L
Sample Diagnosis (from Pathology Verification):	Crohns disease
Normal:	0%
Lesional:	100%
Tumor:	0%
Tumor Hypo/Acellular Stroma:	0%
Tumor Hypercellular Stroma:	0%
Necrosis:	0%
Pathology Verification notes from H&E review:	Non Tumor Structures: 40% Mucosa, 40% Submucosa, 20% Muscle
CASE Diagnosis (from medical center path report):	Crohns disease
Age:	32
Gender:	Male
Storage:	Store frozen tissue sections at -80°C.



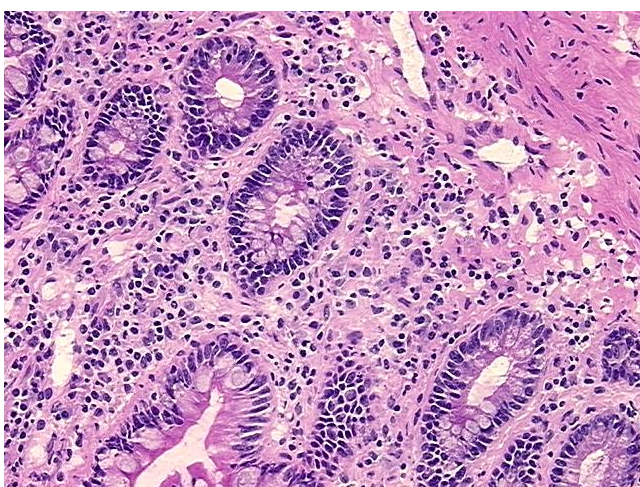
[View online »](#)

**Stability:** All frozen tissue sections are stable for 1 year from date of purchase if stored at -80°C without repeated freeze/thaws.

**Product images:**



4x Image



20x Image