

## Product datasheet for **CS636144**

### Frozen Tissue Sections, Pancreas

#### Product data:

|                                                   |                                                                                           |
|---------------------------------------------------|-------------------------------------------------------------------------------------------|
| Product Type:                                     | Frozen Sections                                                                           |
| Disease State:                                    | Cancer                                                                                    |
| Diagnosis Category:                               | Pancreatic Cancer                                                                         |
| Tissue:                                           | Pancreas                                                                                  |
| Frozen Sample ID:                                 | FR0002D319                                                                                |
| Case ID:                                          | CU0000011006                                                                              |
| Tissue of Origin:                                 | Pancreas                                                                                  |
| Site of Finding:                                  | Pancreas                                                                                  |
| Appearance:                                       | T                                                                                         |
| Sample Diagnosis (from Pathology Verification):   | Adenocarcinoma of pancreas, ductal                                                        |
| Normal:                                           | 0%                                                                                        |
| Lesional:                                         | 90%                                                                                       |
| Tumor:                                            | 10%                                                                                       |
| Tumor Hypo/Acellular Stroma:                      | 0%                                                                                        |
| Tumor Hypercellular Stroma:                       | 0%                                                                                        |
| Necrosis:                                         | 0%                                                                                        |
| Pathology Verification notes from H&E review:     | lesion:chronic pancreatitis; 60% exocrine epithelium, 30% endocrine epithelium, 10% ducts |
| CASE Diagnosis (from medical center path report): | Adenocarcinoma of pancreas, ductal                                                        |
| Age:                                              | 54                                                                                        |
| Gender:                                           | Female                                                                                    |
| Tumor Grade:                                      | AJCC G2: Moderately differentiated                                                        |



[View online »](#)

Minimum Stage Grouping: IIA

T (Extent of Primary Tumor): T3

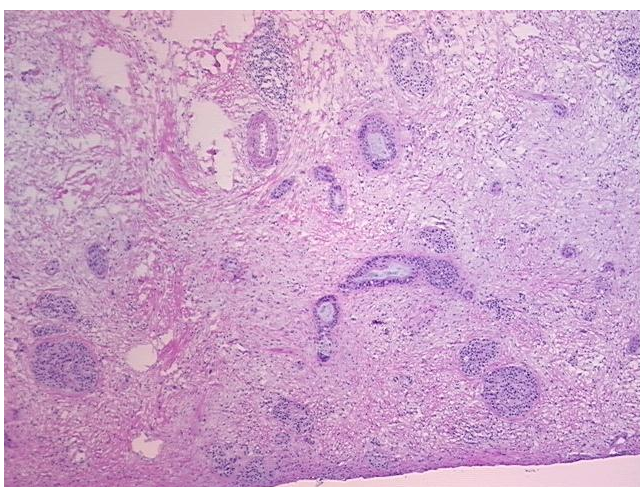
N (Lymph node metastasis): N0

M (Distant metastasis): MX

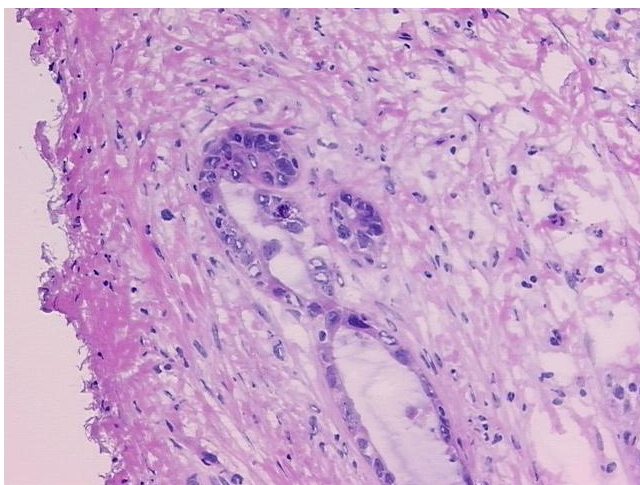
Storage: Store frozen tissue sections at -80°C.

Stability: All frozen tissue sections are stable for 1 year from date of purchase if stored at -80°C without repeated freeze/thaws.

### Product images:



4x Image



20x Image