

## Product datasheet for **CS636096**

### Frozen Tissue Sections, Colon: sigmoid

#### Product data:

Product Type:	Frozen Sections
Disease State:	Cancer
Diagnosis Category:	Colorectal Cancer
Tissue:	Colon
Frozen Sample ID:	FR0002D247
Case ID:	CU0000010998
Tissue of Origin:	Colon: sigmoid
Site of Finding:	Colon: sigmoid
Appearance:	T
Sample Diagnosis (from Pathology Verification):	Adenocarcinoma of colon
Normal:	0%
Lesional:	0%
Tumor:	45%
Tumor Hypo/Acellular Stroma:	0%
Tumor Hypercellular Stroma:	50%
Necrosis:	5%
Pathology Verification notes from H&E review:	tumor stroma contains prominent lymphoplasmacytic infiltrate



**CASE Diagnosis (from medical center path report):** Adenocarcinoma of colon

**Age:** 54

**Gender:** Male

**Tumor Grade:** AJCC G2: Moderately differentiated

**Minimum Stage Grouping:** IIIC

**T (Extent of Primary Tumor):** T4

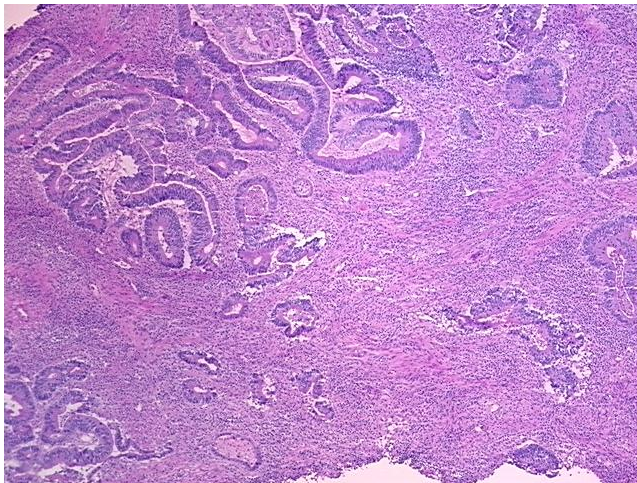
**N (Lymph node metastasis):** N2

**M (Distant metastasis):** MX

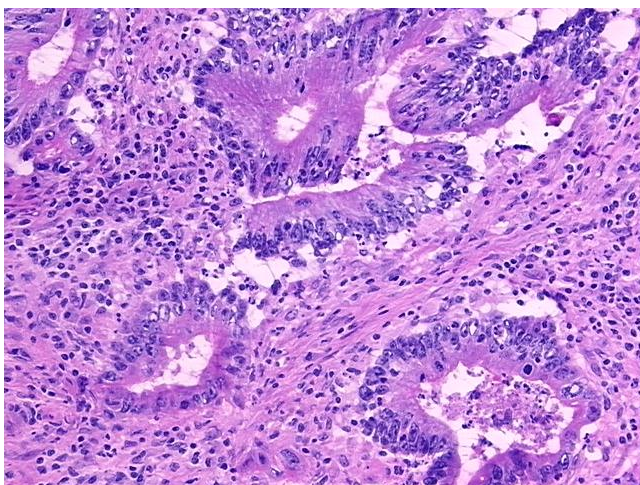
**Storage:** Store frozen tissue sections at -80°C.

**Stability:** All frozen tissue sections are stable for 1 year from date of purchase if stored at -80°C without repeated freeze/thaws.

**Product images:**



4x Image



20x Image