

Product datasheet for **CS635576**

Frozen Tissue Sections, Ovary: left

Product data:

Product Type:	Frozen Sections
Disease State:	Cancer
Diagnosis Category:	Ovarian Cancer
Tissue:	Ovary
Frozen Sample ID:	FR0002BA4C
Case ID:	CU0000010537
Tissue of Origin:	Ovary: left
Site of Finding:	Ovary: left
Appearance:	T
Sample Diagnosis (from Pathology Verification):	Adenocarcinoma of ovary
Normal:	0%
Lesional:	0%
Tumor:	60%
Tumor Hypo/Acellular Stroma:	10%
Tumor Hypercellular Stroma:	0%
Necrosis:	30%
Pathology Verification notes from H&E review:	tumor stroma contains fibroblasts



[View online »](#)

CASE Diagnosis (from medical center path report): Adenocarcinoma of ovary

Age: 73

Gender: Female

Tumor Grade: FIGO G3: Poorly differentiated

Minimum Stage Grouping: IIA

T (Extent of Primary Tumor): T2a

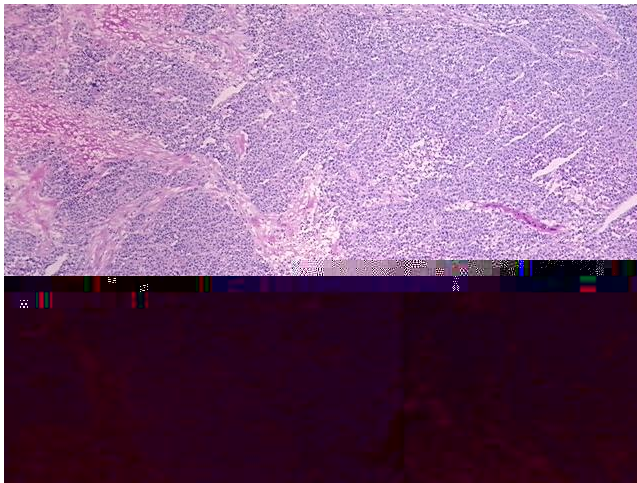
N (Lymph node metastasis): NX

M (Distant metastasis): MX

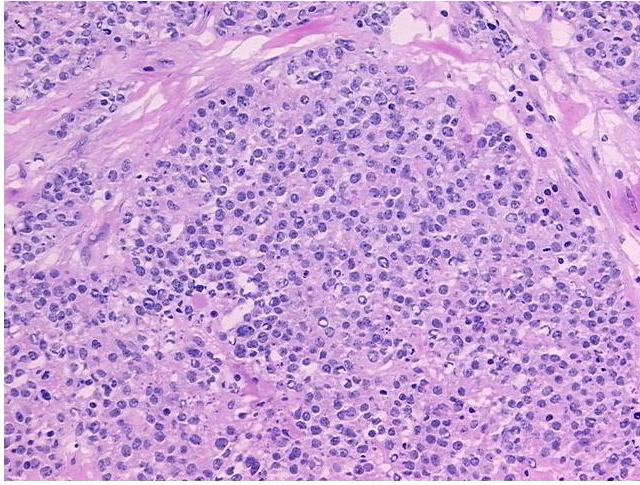
Storage: Store frozen tissue sections at -80°C .

Stability: All frozen tissue sections are stable for 1 year from date of purchase if stored at -80°C without repeated freeze/thaws.

Product images:



4x Image



20x Image