

Product datasheet for **CS635515**

Frozen Tissue Sections, Endometriotic tissue

Product data:

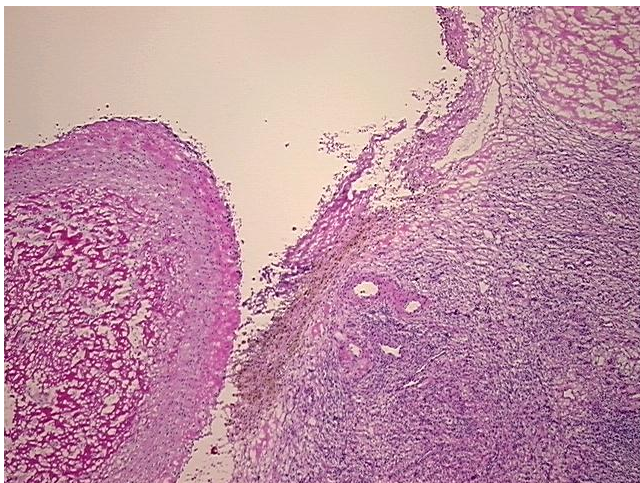
| | |
|---|---|
| Product Type: | Frozen Sections |
| Disease State: | Other Disease |
| Diagnosis Category: | Endometriosis |
| Tissue: | Endometriotic tissue |
| Frozen Sample ID: | FR0002B98A |
| Case ID: | CU0000010530 |
| Tissue of Origin: | Endometriotic tissue |
| Site of Finding: | Ovary |
| Appearance: | L |
| Sample Diagnosis (from Pathology Verification): | Endometriosis |
| Normal: | 85% |
| Lesional: | 15% |
| Tumor: | 0% |
| Tumor Hypo/Acellular Stroma: | 0% |
| Tumor Hypercellular Stroma: | 0% |
| Necrosis: | 0% |
| Pathology Verification notes from H&E review: | normal: 85% ovarian stroma, 15% hilar vessels; lesion:endometriosis |
| CASE Diagnosis (from medical center path report): | Endometriosis |
| Age: | 41 |
| Gender: | Female |
| Storage: | Store frozen tissue sections at -80°C. |



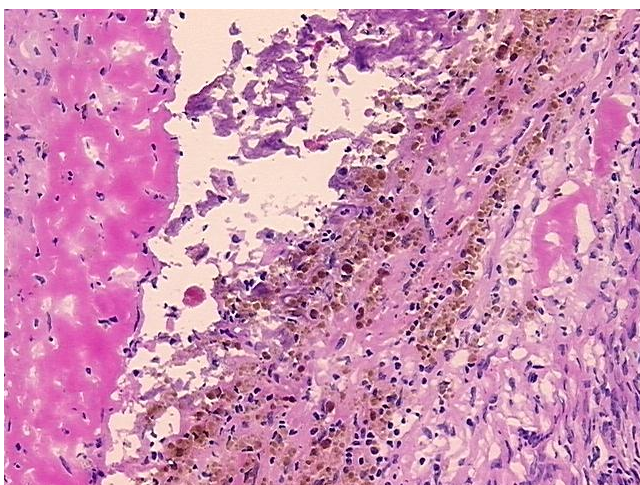
[View online »](#)

Stability: All frozen tissue sections are stable for 1 year from date of purchase if stored at -80°C without repeated freeze/thaws.

Product images:



4x Image



20x Image