

## Product datasheet for **CS634667**

### Frozen Tissue Sections, Bone

#### Product data:

Product Type:	Frozen Sections
Disease State:	Cancer
Diagnosis Category:	Sarcoma
Tissue:	Bone
Frozen Sample ID:	FR0002BD1D
Case ID:	CU0000009398
Tissue of Origin:	Bone
Site of Finding:	Lung
Appearance:	T
Sample Diagnosis (from Pathology Verification):	Osteosarcoma, metastatic
Normal:	40%
Lesional:	0%
Tumor:	40%
Tumor Hypo/Acellular Stroma:	10%
Tumor Hypercellular Stroma:	10%
Necrosis:	0%
Pathology Verification notes from H&E review:	tumor acellular stroma contains osteoid material
CASE Diagnosis (from medical center path report):	Osteosarcoma, metastatic
Age:	20
Gender:	Female
Tumor Grade:	Not Reported



[View online »](#)

Minimum Stage  
Grouping: IVA

T (Extent of Primary  
Tumor): TX

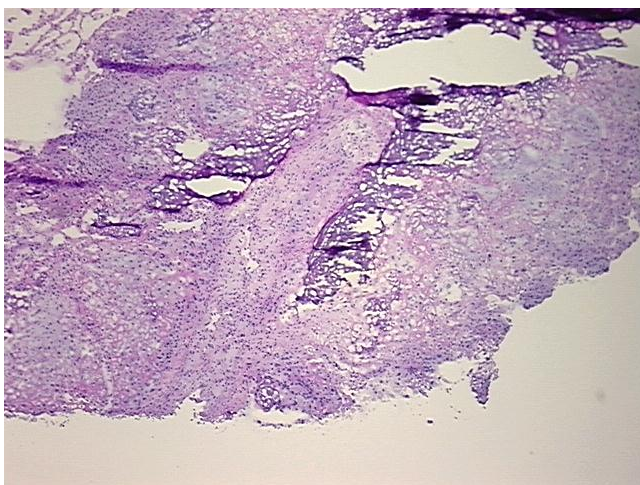
N (Lymph node  
metastasis): NX

M (Distant metastasis): M1a

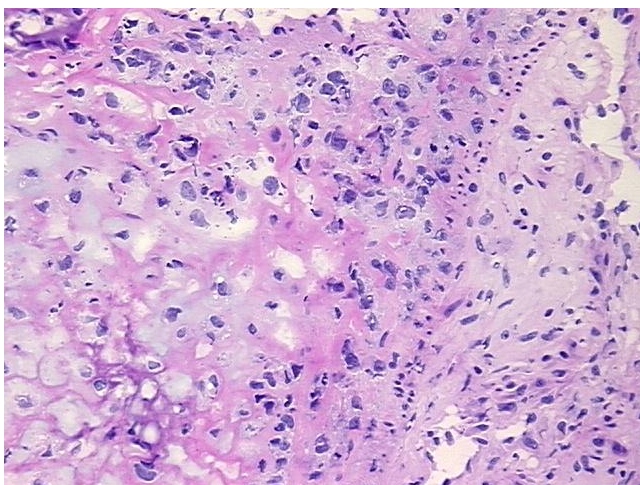
Storage: Store frozen tissue sections at -80°C.

Stability: All frozen tissue sections are stable for 1 year from date of purchase if stored at -80°C without repeated freeze/thaws.

### Product images:



4x Image



20x Image