

Product datasheet for **CS634375**

Frozen Tissue Sections, Endometriotic tissue

Product data:

Product Type:	Frozen Sections
Disease State:	Other Disease
Diagnosis Category:	Endometriosis
Tissue:	Endometriotic tissue
Frozen Sample ID:	FR00028B47
Case ID:	CU0000009354
Tissue of Origin:	Endometriotic tissue
Site of Finding:	Colon
Appearance:	L
Sample Diagnosis (from Pathology Verification):	Endometriosis
Normal:	60%
Lesional:	40%
Tumor:	0%
Tumor Hypo/Acellular Stroma:	0%
Tumor Hypercellular Stroma:	0%
Necrosis:	0%
Pathology Verification notes from H&E review:	5% mucosa, 95% muscle with endometriosis
CASE Diagnosis (from medical center path report):	Endometriosis
Age:	33
Gender:	Female
Storage:	Store frozen tissue sections at -80°C.



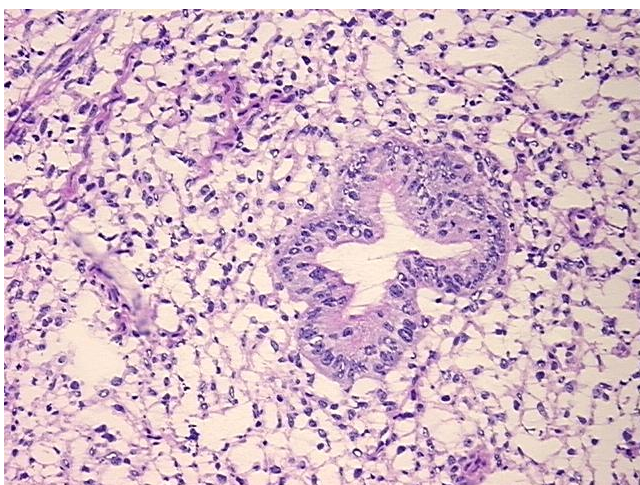
[View online »](#)

Stability: All frozen tissue sections are stable for 1 year from date of purchase if stored at -80°C without repeated freeze/thaws.

Product images:



4x Image



20x Image