

## Product datasheet for **CS634370**

### Frozen Tissue Sections, Colon: sigmoid

#### Product data:

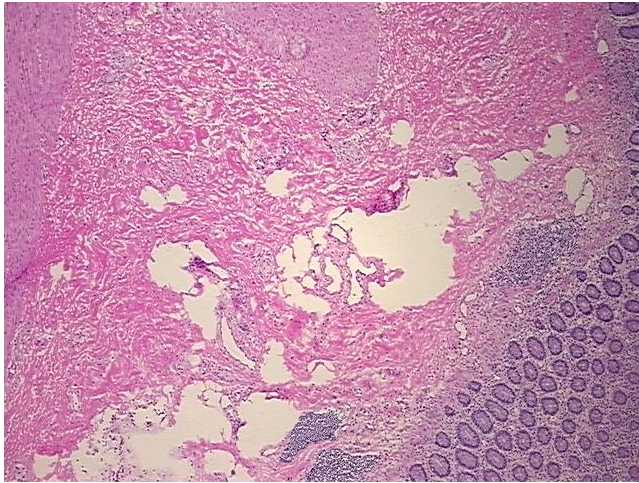
Product Type:	Frozen Sections
Disease State:	Other Disease
Diagnosis Category:	Healing Tissue Changes
Tissue:	Colon
Frozen Sample ID:	FR00028B3D
Case ID:	CU0000009354
Tissue of Origin:	Colon: sigmoid
Site of Finding:	Colon: sigmoid
Appearance:	L
Sample Diagnosis (from Pathology Verification):	Healing tissue changes
Normal:	20%
Lesional:	80%
Tumor:	0%
Tumor Hypo/Acellular Stroma:	0%
Tumor Hypercellular Stroma:	0%
Necrosis:	0%
Pathology Verification notes from H&E review:	lesion: intramuscular fibrosis and reparative changes
CASE Diagnosis (from medical center path report):	Endometriosis
Age:	33
Gender:	Female
Storage:	Store frozen tissue sections at -80°C.



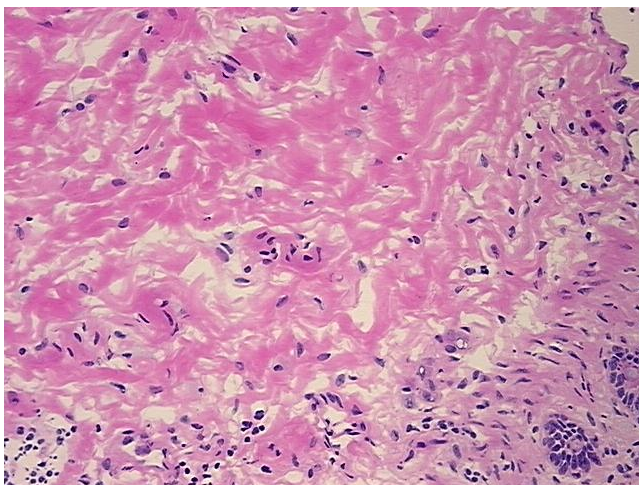
[View online »](#)

**Stability:** All frozen tissue sections are stable for 1 year from date of purchase if stored at -80°C without repeated freeze/thaws.

**Product images:**



4x Image



20x Image