

Product datasheet for **CS634330**

Frozen Tissue Sections, Small intestine

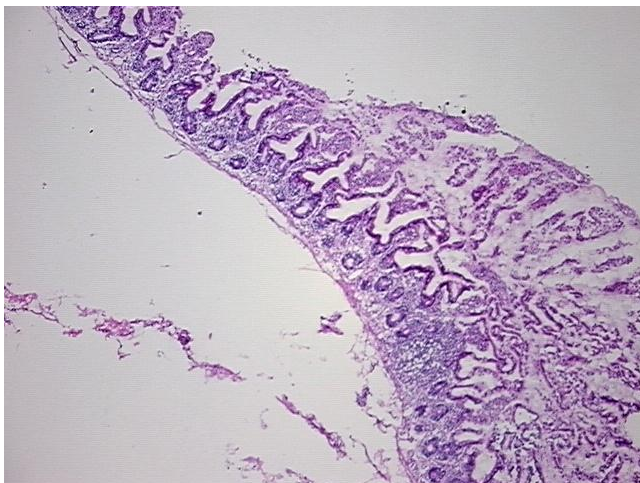
Product data:

Product Type:	Frozen Sections
Disease State:	Normal
Diagnosis Category:	Normal
Tissue:	Small intestine
Frozen Sample ID:	FR00028A78
Case ID:	CU0000009345
Tissue of Origin:	Small intestine
Site of Finding:	Small intestine
Appearance:	R
Sample Diagnosis (from Pathology Verification):	Within normal limits
Normal:	100%
Lesional:	0%
Tumor:	0%
Tumor Hypo/Acellular Stroma:	0%
Tumor Hypercellular Stroma:	0%
Necrosis:	0%
Pathology Verification notes from H&E review:	75% mucosa, 2% submucosa, 23% muscle
CASE Diagnosis (from medical center path report):	Crohns disease
Age:	20
Gender:	Female
Storage:	Store frozen tissue sections at -80°C.

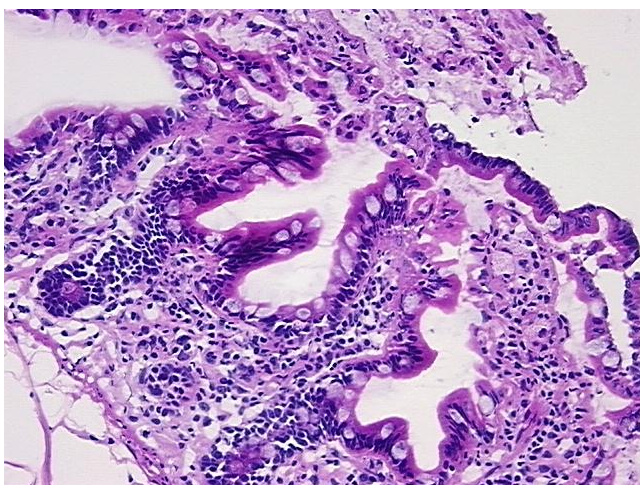

[View online »](#)

Stability: All frozen tissue sections are stable for 1 year from date of purchase if stored at -80°C without repeated freeze/thaws.

Product images:



4x Image



20x Image