

## Product datasheet for **CS633772**

### Frozen Tissue Sections, Mitral valve

#### Product data:

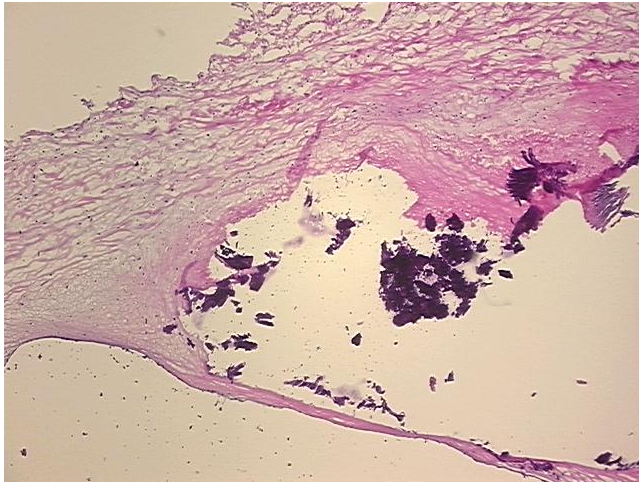
Product Type:	Frozen Sections
Disease State:	Other Disease
Diagnosis Category:	Heart Disorder
Tissue:	Heart valve
Frozen Sample ID:	FR0002A96A
Case ID:	CU0000009114
Tissue of Origin:	Mitral valve
Site of Finding:	Mitral valve
Appearance:	L
Sample Diagnosis (from Pathology Verification):	Degeneration of cardiac valve
Normal:	0%
Lesional:	100%
Tumor:	0%
Tumor Hypo/Acellular Stroma:	0%
Tumor Hypercellular Stroma:	0%
Necrosis:	0%
Pathology Verification notes from H&E review:	Non Tumor Structures: 2% endothelial lining, 98% calcific valve stroma
CASE Diagnosis (from medical center path report):	Heart valve disorder
Age:	78
Gender:	Female
Storage:	Store frozen tissue sections at -80°C.



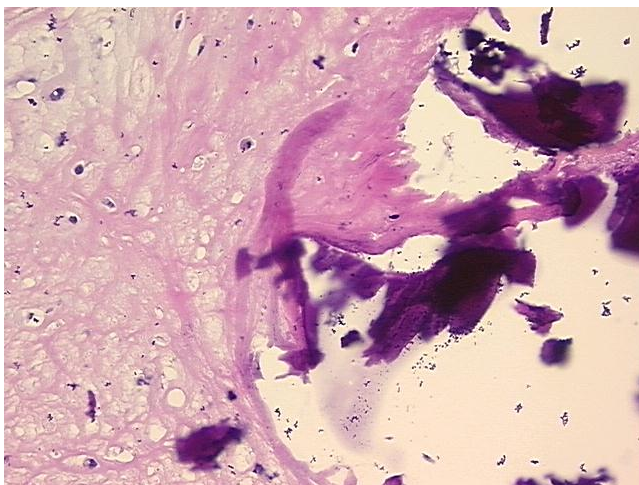
[View online »](#)

**Stability:** All frozen tissue sections are stable for 1 year from date of purchase if stored at -80°C without repeated freeze/thaws.

**Product images:**



4x Image



20x Image