

Product datasheet for **CS633574**

Frozen Tissue Sections, Breast

Product data:

| | |
|----------------------------------------------------------|------------------------|
| Product Type: | Frozen Sections |
| Disease State: | Other Disease |
| Diagnosis Category: | Benign Tumors |
| Tissue: | Breast |
| Frozen Sample ID: | FR0002A625 |
| Case ID: | CU0000009084 |
| Tissue of Origin: | Breast |
| Site of Finding: | Breast |
| Appearance: | T |
| Sample Diagnosis (from Pathology Verification): | Fibroadenoma of breast |
| Normal: | 0% |
| Lesional: | 0% |
| Tumor: | 40% |
| Tumor Hypo/Acellular Stroma: | 0% |
| Tumor Hypercellular Stroma: | 60% |
| Necrosis: | 0% |
| Pathology Verification notes from H&E review: | tumor stroma: fibrosis |



CASE Diagnosis (from medical center path report): Fibroadenoma of breast

Age: 23

Gender: Female

Tumor Grade: Not Reported

Minimum Stage Grouping: Not Reported

T (Extent of Primary Tumor): Not Reported

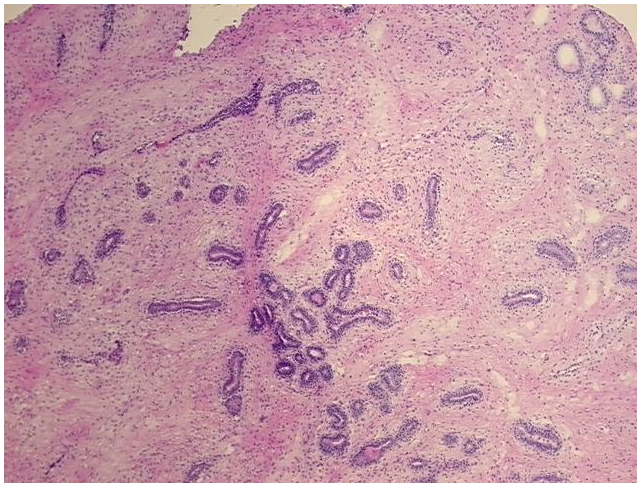
N (Lymph node metastasis): Not Reported

M (Distant metastasis): Not Reported

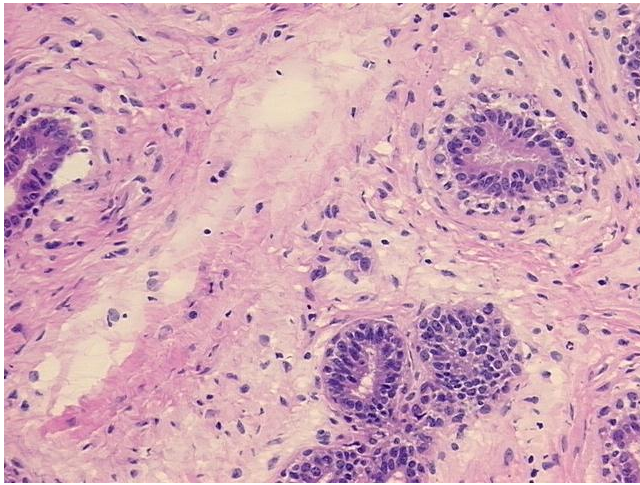
Storage: Store frozen tissue sections at -80°C .

Stability: All frozen tissue sections are stable for 1 year from date of purchase if stored at -80°C without repeated freeze/thaws.

Product images:



4x Image



20x Image