

Product datasheet for **CS633552**

Frozen Tissue Sections, Colon: right

Product data:

Product Type:	Frozen Sections
Disease State:	Other Disease
Diagnosis Category:	Benign Tumors
Tissue:	Colon
Frozen Sample ID:	FR0002A592
Case ID:	CU0000009081
Tissue of Origin:	Colon: right
Site of Finding:	Colon: right
Appearance:	T
Sample Diagnosis (from Pathology Verification):	Adenoma of colon
Normal:	95%
Lesional:	0%
Tumor:	5%
Tumor Hypo/Acellular Stroma:	0%
Tumor Hypercellular Stroma:	0%
Necrosis:	0%
Pathology Verification notes from H&E review:	lesion: focal adenomatous change; normal: 80% mucosa, 10% submucosa, 10% muscle



[View online »](#)

CASE Diagnosis (from medical center path report): Adenocarcinoma of colon

Age: 63

Gender: Male

Tumor Grade: AJCC G1: Well differentiated

Minimum Stage Grouping: I

T (Extent of Primary Tumor): T2

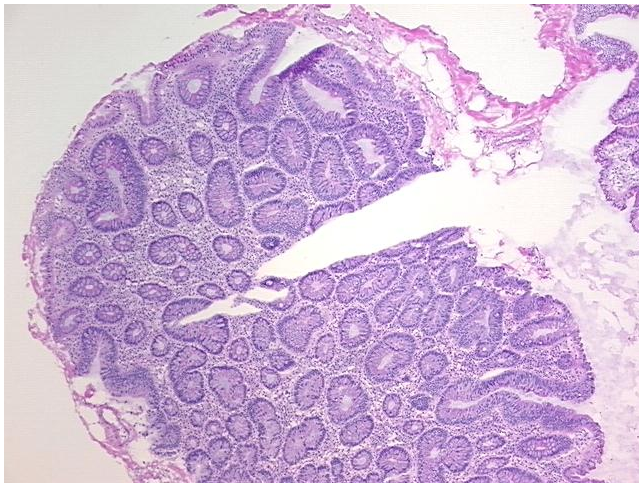
N (Lymph node metastasis): N0

M (Distant metastasis): MX

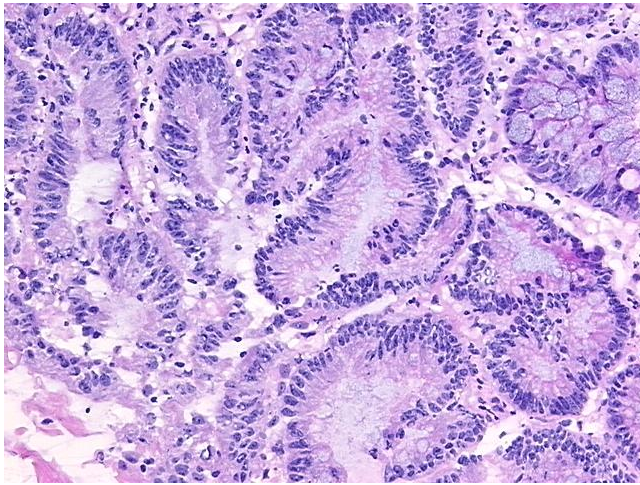
Storage: Store frozen tissue sections at -80°C .

Stability: All frozen tissue sections are stable for 1 year from date of purchase if stored at -80°C without repeated freeze/thaws.

Product images:



4x Image



20x Image