

Product datasheet for **CS633336**

Frozen Tissue Sections, Ovary: left

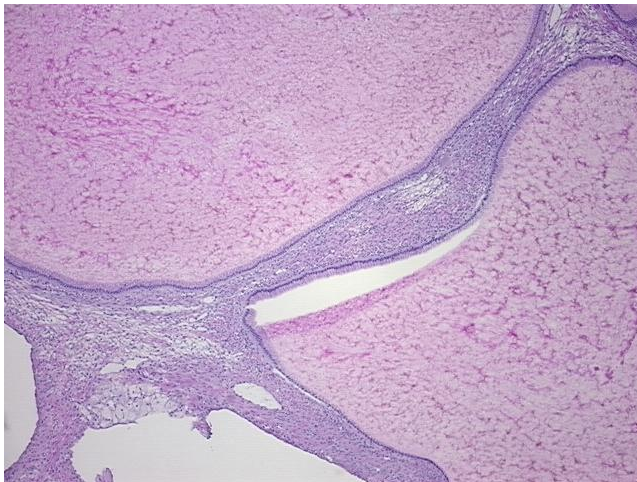
Product data:

Product Type:	Frozen Sections
Disease State:	Other Disease
Diagnosis Category:	Borderline Ovarian Tumor
Tissue:	Ovary
Frozen Sample ID:	FR0002F65E
Case ID:	CU0000006911
Tissue of Origin:	Ovary: left
Site of Finding:	Ovary: left
Appearance:	T
Sample Diagnosis (from Pathology Verification):	Tumor of ovary, mucinous, borderline
Normal:	0%
Lesional:	0%
Tumor:	15%
Tumor Hypo/Acellular Stroma:	65%
Tumor Hypercellular Stroma:	20%
Necrosis:	0%
Pathology Verification notes from H&E review:	Tumor Stroma (Hypo/Acellular): Mucin

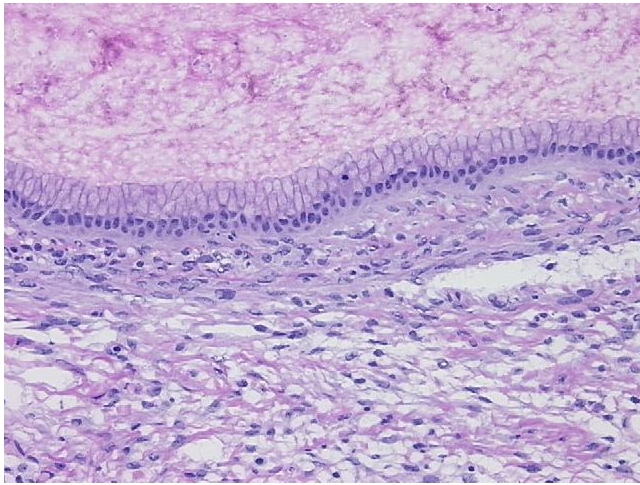


[View online »](#)

CASE Diagnosis (from medical center path report):	Tumor of ovary, mucinous, borderline
Age:	49
Gender:	Female
Tumor Grade:	AJCC GB: Borderline malignancy
Minimum Stage Grouping:	III A
T (Extent of Primary Tumor):	T3a
N (Lymph node metastasis):	NX
M (Distant metastasis):	MX
Diagnostic Test Results:	Cytokeratin 7 ~ CK7 ! by IHC,Positive; Cytokeratin 20 ~ CK20 ! by IHC,Positive
Storage:	Store frozen tissue sections at -80°C.
Stability:	All frozen tissue sections are stable for 1 year from date of purchase if stored at -80°C without repeated freeze/thaws.

Product images:

4x Image



20x Image