

Product datasheet for **CS633208**

Frozen Tissue Sections, Lymphoid tissue

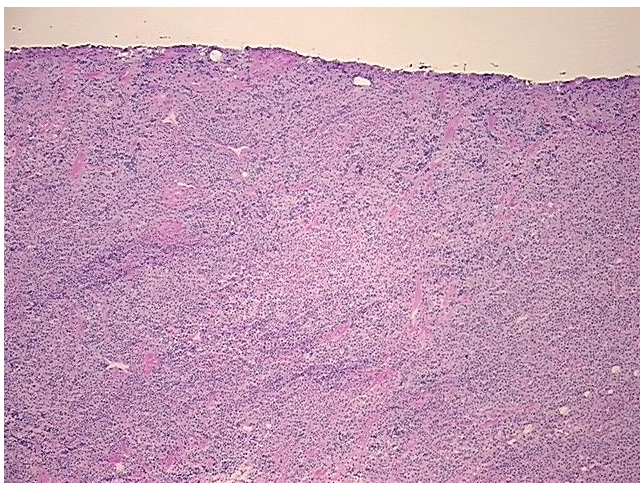
Product data:

Product Type:	Frozen Sections
Disease State:	Other Disease
Diagnosis Category:	Lymphoproliferative Disorder
Tissue:	Lymph node
Frozen Sample ID:	FR0002F22F
Case ID:	CU0000006892
Tissue of Origin:	Lymphoid tissue
Site of Finding:	Lymph node
Appearance:	T
Sample Diagnosis (from Pathology Verification):	Lymphoproliferative disorder, post-transplant
Normal:	10%
Lesional:	0%
Tumor:	90%
Tumor Hypo/Acellular Stroma:	0%
Tumor Hypercellular Stroma:	0%
Necrosis:	0%
Pathology Verification notes from H&E review:	Monomorphic B-cell post transplant lymphoproliferative disorder with morphologic features of Burkitt lymphoma
CASE Diagnosis (from medical center path report):	Lymphoproliferative disorder, post-transplant
Age:	58
Gender:	Male
Tumor Grade:	Not Reported

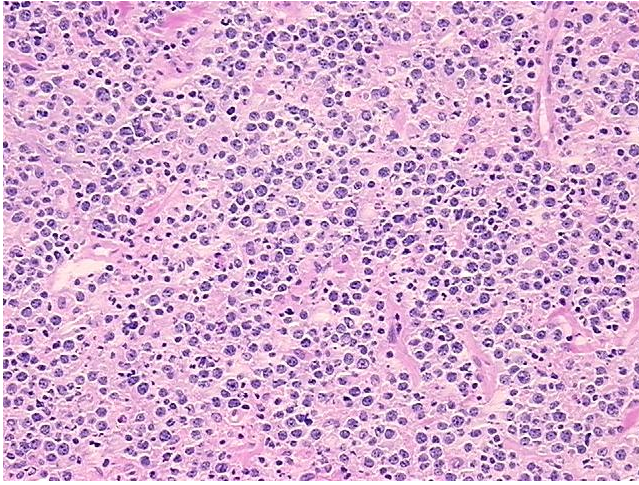


[View online »](#)

Minimum Stage Grouping:	I
T (Extent of Primary Tumor):	Not applicable
N (Lymph node metastasis):	Not applicable
M (Distant metastasis):	Not applicable
Diagnostic Test Results:	EBV-EBNA2 ~ Epstein-Barr nuclear antigen-2,Negative; Ki67 ~ MIB1 ! by IHC,Positive; EBV latent membrane protein 1 ~ LMP1 ! by IHC,Negative; CD10 ~ CALLA ~ Common ALL antigen ! by IHC,Positive
Storage:	Store frozen tissue sections at -80°C.
Stability:	All frozen tissue sections are stable for 1 year from date of purchase if stored at -80°C without repeated freeze/thaws.

Product images:

4x Image



20x Image