

Product datasheet for **CS632785**

Frozen Tissue Sections, Soft tissue

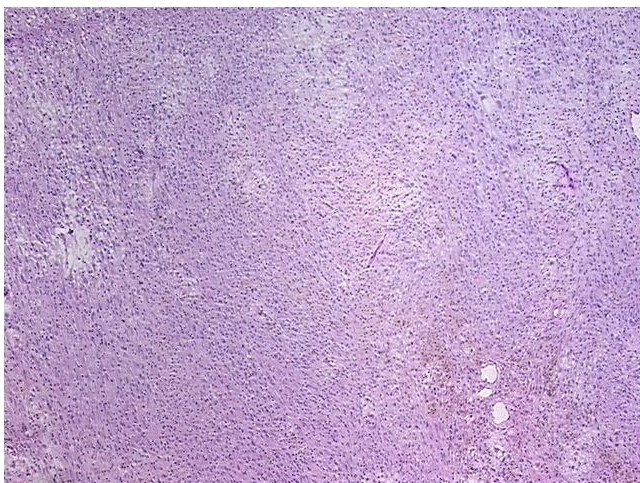
Product data:

Product Type:	Frozen Sections
Disease State:	Cancer
Diagnosis Category:	Sarcoma
Tissue:	Soft tissue
Frozen Sample ID:	FR00029D8B
Case ID:	CU0000006862
Tissue of Origin:	Soft tissue
Site of Finding:	Foot
Appearance:	T
Sample Diagnosis (from Pathology Verification):	Histiocytoma, malignant fibrous
Normal:	0%
Lesional:	0%
Tumor:	80%
Tumor Hypo/Acellular Stroma:	15%
Tumor Hypercellular Stroma:	0%
Necrosis:	5%
Pathology Verification notes from H&E review:	Tumor: treatment effect; Tumor Stroma (Hypo/Acellular): Myxoid; Inflammation: Mild Mixed inflammatory infiltrate
CASE Diagnosis (from medical center path report):	Histiocytoma, malignant fibrous
Age:	48
Gender:	Female
Tumor Grade:	Not Reported

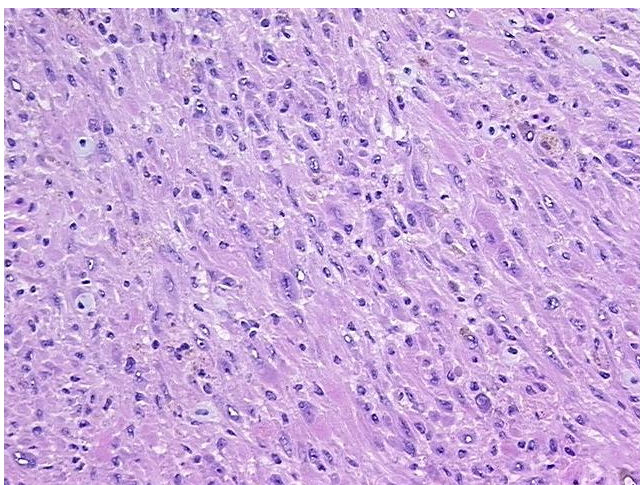


[View online »](#)

Minimum Stage Grouping:	I
T (Extent of Primary Tumor):	T1a
N (Lymph node metastasis):	NX
M (Distant metastasis):	MX
Diagnostic Test Results:	Alpha-1-Antitrypsin ~ A-AT,Equivocal; MART-1 ~ Melanoma Marker ~ Melan-A,Negative; Vimentin ~ VIM ! by IHC,Positive; HMB45 melanoma antigen ~ GP100 ! by IHC,Negative; S100 protein,Negative; CD34 ~ HPCA ! by IHC,Positive
Storage:	Store frozen tissue sections at -80°C.
Stability:	All frozen tissue sections are stable for 1 year from date of purchase if stored at -80°C without repeated freeze/thaws.

Product images:

4x Image



20x Image