

Product datasheet for **CS632565**

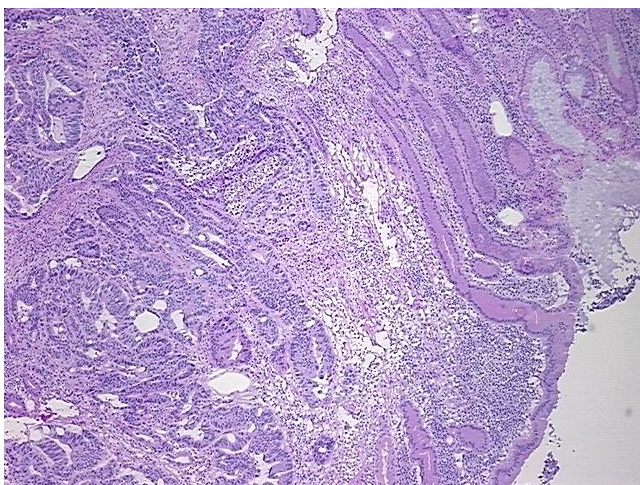
Frozen Tissue Sections, Colon: right

Product data:

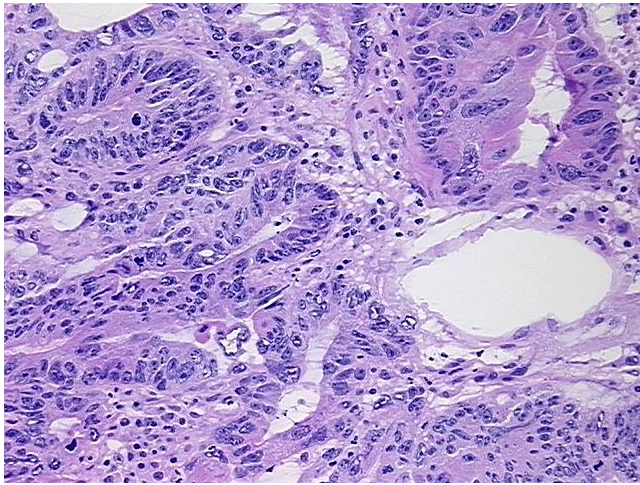
Product Type:	Frozen Sections
Disease State:	Cancer
Diagnosis Category:	Colorectal Cancer
Tissue:	Colon
Frozen Sample ID:	FR000298BD
Case ID:	CU0000006839
Tissue of Origin:	Colon: right
Site of Finding:	Colon: right
Appearance:	T
Sample Diagnosis (from Pathology Verification):	Adenocarcinoma of colon
Normal:	45%
Lesional:	0%
Tumor:	40%
Tumor Hypo/Acellular Stroma:	0%
Tumor Hypercellular Stroma:	10%
Necrosis:	5%
CASE Diagnosis (from medical center path report):	Adenocarcinoma of colon



Age:	51
Gender:	Male
Tumor Grade:	AJCC G2: Moderately differentiated
Minimum Stage Grouping:	IV
T (Extent of Primary Tumor):	T3
N (Lymph node metastasis):	N2
M (Distant metastasis):	M1
Storage:	Store frozen tissue sections at -80°C.
Stability:	All frozen tissue sections are stable for 1 year from date of purchase if stored at -80°C without repeated freeze/thaws.

Product images:

4x Image



20x Image