

## Product datasheet for **CS632322**

### Frozen Tissue Sections, Lymphoid tissue

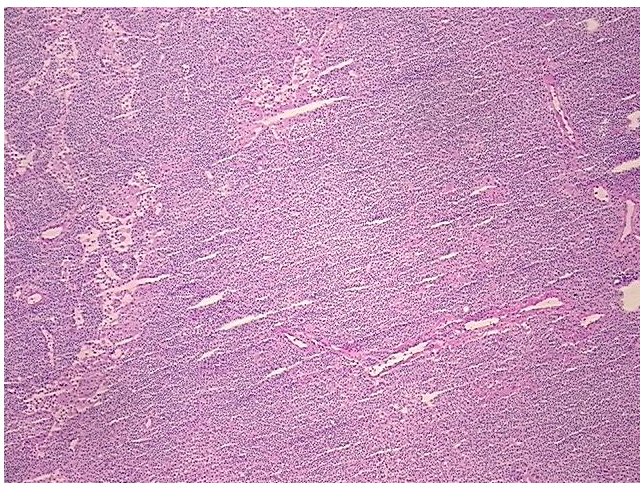
#### Product data:

Product Type:	Frozen Sections
Disease State:	Cancer
Diagnosis Category:	Lymphoma
Tissue:	Lymphoid tissue
Frozen Sample ID:	FR5B33B6A3
Case ID:	CU0000006821
Tissue of Origin:	Lymphoid tissue
Site of Finding:	Lung
Appearance:	T
Sample Diagnosis (from Pathology Verification):	Lymphoma, extranodal marginal zone B-cell
Normal:	0%
Lesional:	0%
Tumor:	95%
Tumor Hypo/Acellular Stroma:	0%
Tumor Hypercellular Stroma:	5%
Necrosis:	0%
Pathology Verification notes from H&E review:	Marginal zone B-cell lymphoma of the "BALT" type (bronchial associated lymphoid tissue).
CASE Diagnosis (from medical center path report):	Lymphoma, extranodal marginal zone B-cell
Age:	53
Gender:	Male
Tumor Grade:	Not Reported

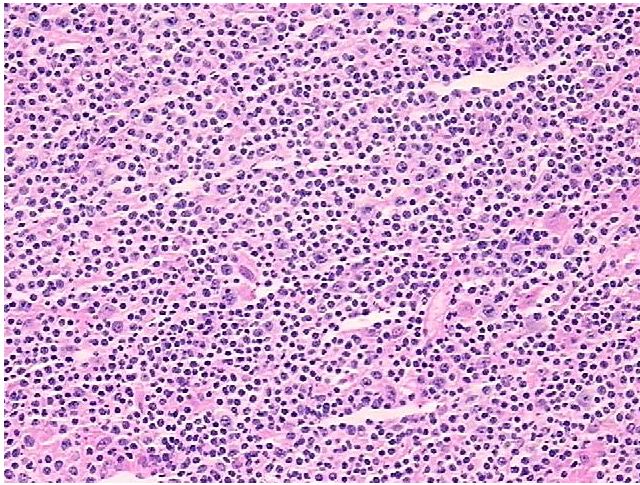


[View online »](#)

Minimum Stage Grouping:	IE
T (Extent of Primary Tumor):	Not applicable
N (Lymph node metastasis):	Not applicable
M (Distant metastasis):	Not applicable
Diagnostic Test Results:	CD3 ~ Leu4 ~ UCHT1 ! by FC,Negative; CD19 ~ B4 ~ Leu12 ! by IHC,Positive; CD22 ~ Leu14 ! by IHC,Positive; CD33 ~ My9 ! by IHC,Negative; Kappa light chain ! by IHC,Positive; CD8 ~ Leu2a ~ T8 ! by IHC,Negative; Lambda light chain ! by IHC,Ne
Storage:	Store frozen tissue sections at -80°C.
Stability:	All frozen tissue sections are stable for 1 year from date of purchase if stored at -80°C without repeated freeze/thaws.

**Product images:**

4x Image



20x Image