

Product datasheet for CS631999

Frozen Tissue Sections, Heart

Product data:

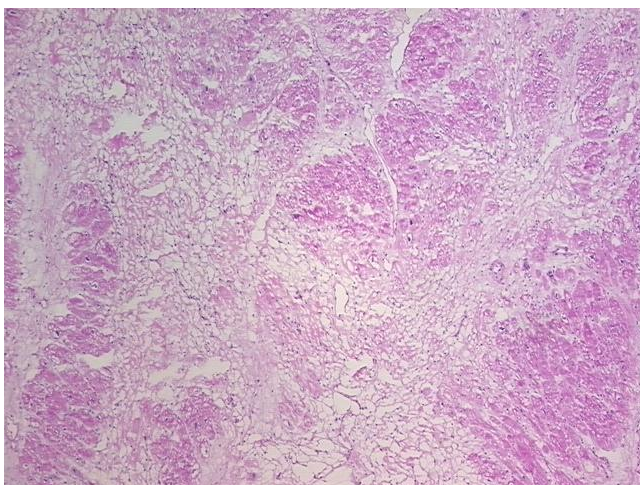
Product Type:	Frozen Sections
Disease State:	Other Disease
Diagnosis Category:	Cardiomyopathy
Tissue:	Heart
Frozen Sample ID:	FR0002901D
Case ID:	CU0000006795
Tissue of Origin:	Heart
Site of Finding:	Heart
Appearance:	L
Sample Diagnosis (from Pathology Verification):	Cardiomyopathy
Normal:	5%
Lesional:	95%
Tumor:	0%
Tumor Hypo/Acellular Stroma:	0%
Tumor Hypercellular Stroma:	0%
Necrosis:	0%
Pathology Verification notes from H&E review:	lesion: 60% abnormal myocardiocytes, 40% scar
CASE Diagnosis (from medical center path report):	Cardiomyopathy
Age:	51
Gender:	Female
Storage:	Store frozen tissue sections at -80°C.



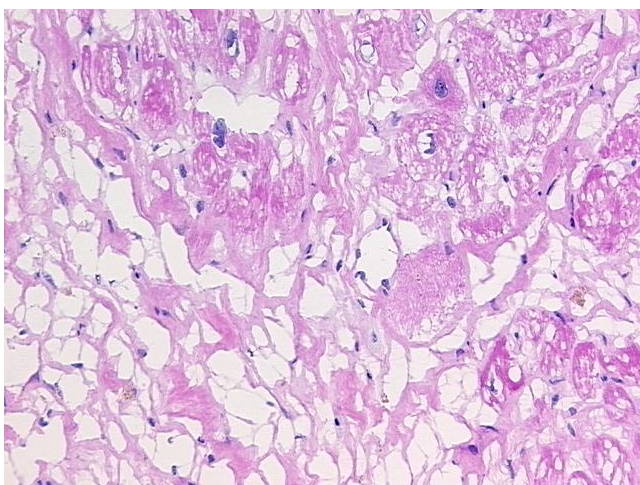
[View online »](#)

Stability: All frozen tissue sections are stable for 1 year from date of purchase if stored at -80°C without repeated freeze/thaws.

Product images:



4x Image



20x Image