

Product datasheet for **CS631815**

Frozen Tissue Sections, Colon: transverse

Product data:

Product Type:	Frozen Sections
Disease State:	Cancer
Diagnosis Category:	Colorectal Cancer
Tissue:	Colon
Frozen Sample ID:	FR00027705
Case ID:	CU0000006781
Tissue of Origin:	Colon: transverse
Site of Finding:	Colon: transverse
Appearance:	T
Sample Diagnosis (from Pathology Verification):	Adenocarcinoma of colon, mucinous
Normal:	0%
Lesional:	0%
Tumor:	45%
Tumor Hypo/Acellular Stroma:	35%
Tumor Hypercellular Stroma:	20%
Necrosis:	0%
Pathology Verification notes from H&E review:	Tumor Stroma (Hypo/Acellular): Mucin



CASE Diagnosis (from medical center path report): Adenocarcinoma of colon, mucinous

Age: 74

Gender: Male

Tumor Grade: AJCC G2: Moderately differentiated

Minimum Stage Grouping: IIA

T (Extent of Primary Tumor): T3

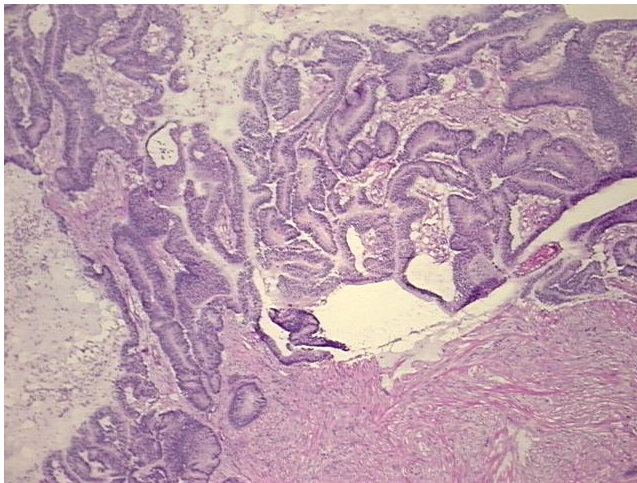
N (Lymph node metastasis): N0

M (Distant metastasis): MX

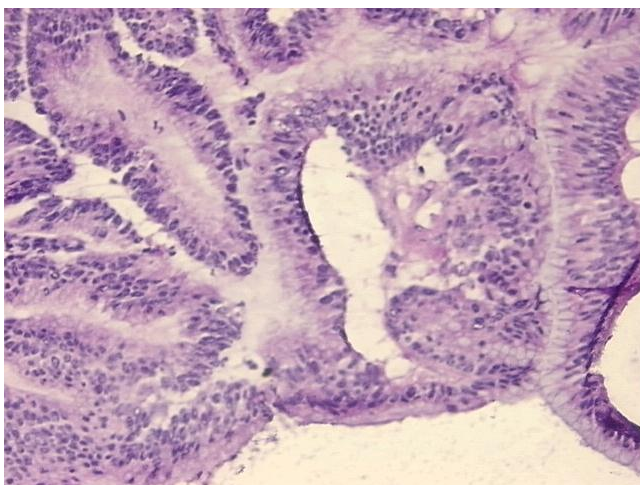
Storage: Store frozen tissue sections at -80°C.

Stability: All frozen tissue sections are stable for 1 year from date of purchase if stored at -80°C without repeated freeze/thaws.

Product images:



4x Image



20x Image