

## Product datasheet for **CS631709**

### Frozen Tissue Sections, Soft tissue

#### Product data:

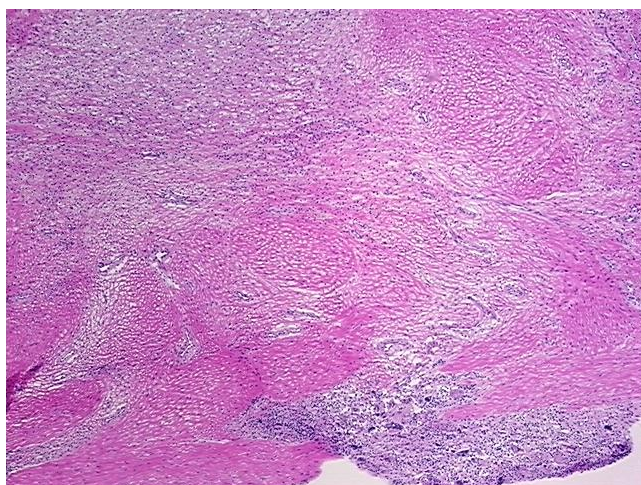
Product Type:	Frozen Sections
Disease State:	Cancer
Diagnosis Category:	Sarcoma
Tissue:	Soft tissue
Frozen Sample ID:	FR00028488
Case ID:	CU0000006764
Tissue of Origin:	Soft tissue
Site of Finding:	Chest wall
Appearance:	T
Sample Diagnosis (from Pathology Verification):	Rhabdomyosarcoma of soft tissue, pleomorphic
Normal:	90%
Lesional:	0%
Tumor:	10%
Tumor Hypo/Acellular Stroma:	0%
Tumor Hypercellular Stroma:	0%
Necrosis:	0%
Pathology Verification notes from H&E review:	Inflammation: Severe Mixed inflammatory infiltrate; Non Tumor Structures: 100% Fascia
CASE Diagnosis (from medical center path report):	Rhabdomyosarcoma of soft tissue, pleomorphic
Age:	33
Gender:	Male
Tumor Grade:	AJCC G3-4: Poorly differentiated or undifferentiated



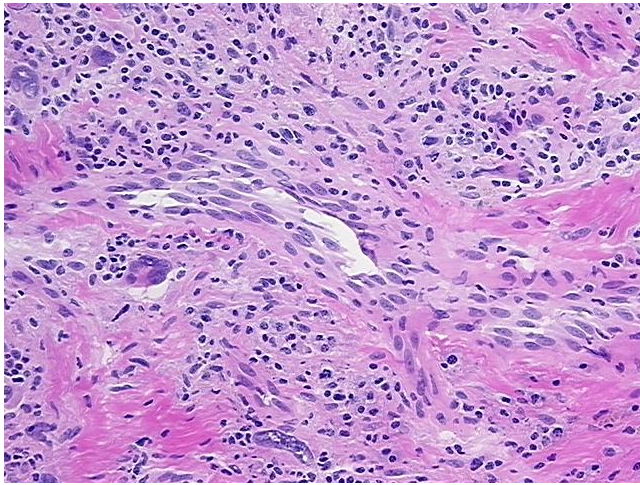
[View online »](#)

Minimum Stage Grouping:	II
T (Extent of Primary Tumor):	T1b
N (Lymph node metastasis):	NX
M (Distant metastasis):	MX
Diagnostic Test Results:	Myogenin ~ Myf4 ! by IHC,Negative; Smooth muscle actin ~ SMA ~ Alpha-SMA ! by IHC,Positive, focal; Desmin ! by IHC,Positive; Cytokeratin AE1/AE3 ~ AE1/AE3 ! by IHC,Negative; MSA ~ Muscle Specific Actin,Negative
Storage:	Store frozen tissue sections at -80°C.
Stability:	All frozen tissue sections are stable for 1 year from date of purchase if stored at -80°C without repeated freeze/thaws.

### Product images:



4x Image



20x Image