

## Product datasheet for **CS631474**

### Frozen Tissue Sections, Small intestine

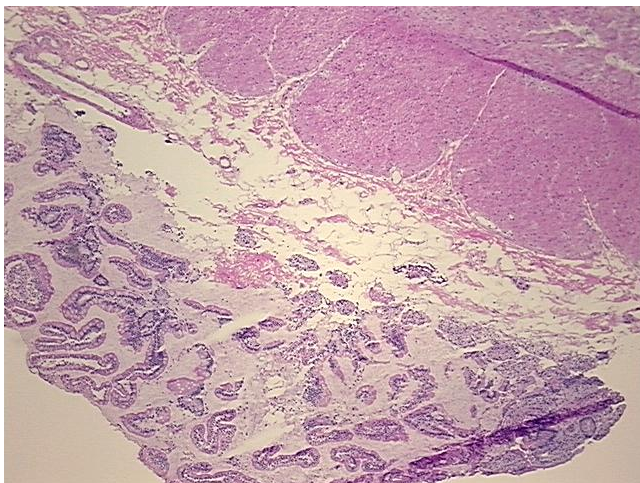
#### Product data:

|   |  |
|---|--|
| Product Type:                                     | Frozen Sections                        |
| Disease State:                                    | Normal                                 |
| Diagnosis Category:                               | Normal                                 |
| Tissue:   | Small intestine                        |
| Frozen Sample ID:                                 | FR00025176                             |
| Case ID:  | CU0000006717                           |
| Tissue of Origin:                                 | Small intestine                        |
| Site of Finding:                                  | Small intestine                        |
| Appearance:                                       | R                                      |
| Sample Diagnosis (from Pathology Verification):   | Within normal limits                   |
| Normal:   | 100%                                   |
| Lesional:   | 0%                                     |
| Tumor:  | 0%                                     |
| Tumor Hypo/Acellular Stroma:                      | 0%                                     |
| Tumor Hypercellular Stroma:                       | 0%                                     |
| Necrosis:   | 0%                                     |
| Pathology Verification notes from H&E review:     | 5% mucosa, 10% submucosa, 85% muscle   |
| CASE Diagnosis (from medical center path report): | Crohns disease                         |
| Age:  | 31                                     |
| Gender:   | Female                                 |
| Storage:  | Store frozen tissue sections at -80°C. |

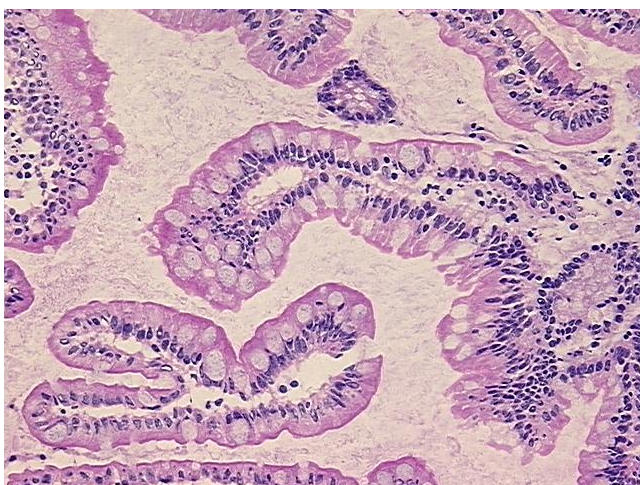

[View online »](#)

**Stability:** All frozen tissue sections are stable for 1 year from date of purchase if stored at -80°C without repeated freeze/thaws.

## Product images:



4x Image



20x Image