

Product datasheet for **CS631301**

Frozen Tissue Sections, Spleen

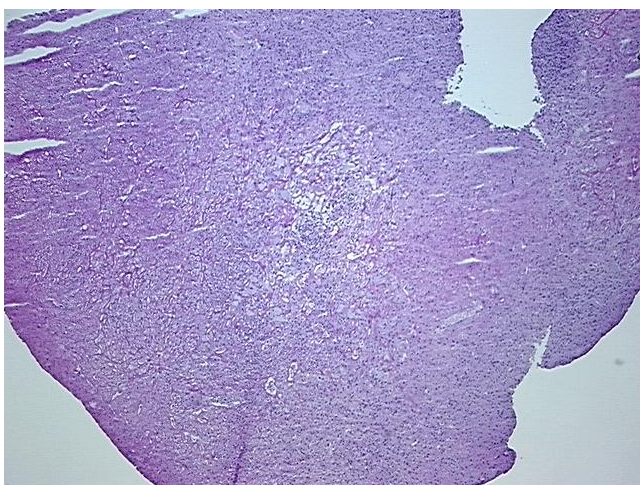
Product data:

Product Type:	Frozen Sections
Disease State:	Other Disease
Diagnosis Category:	Myeloproliferative/Myelodysplastic Disorder
Tissue:	Spleen
Frozen Sample ID:	FR5B3397AD
Case ID:	CU0000006697
Tissue of Origin:	Spleen
Site of Finding:	Spleen
Appearance:	L
Sample Diagnosis (from Pathology Verification):	Myeloproliferative/Myelodysplastic disorder
Normal:	0%
Lesional:	15%
Tumor:	0%
Tumor Hypo/Acellular Stroma:	0%
Tumor Hypercellular Stroma:	0%
Necrosis:	85%
Pathology Verification notes from H&E review:	Extensive infarction
CASE Diagnosis (from medical center path report):	Myeloproliferative/Myelodysplastic disorder
Age:	84
Gender:	Male
Tumor Grade:	Not Reported

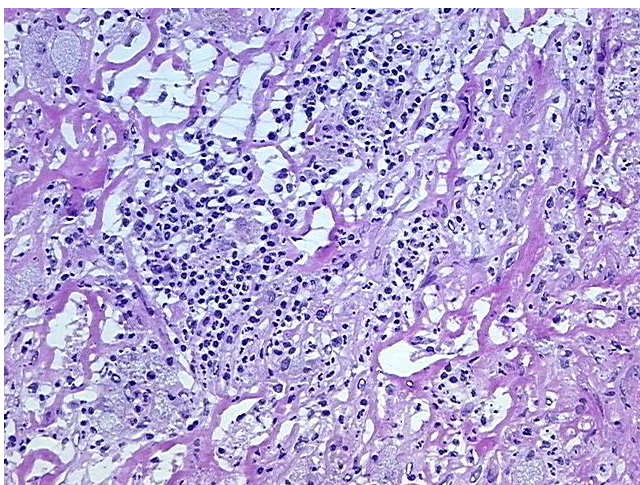


[View online »](#)

Minimum Stage Grouping:	IV
T (Extent of Primary Tumor):	Not applicable
N (Lymph node metastasis):	Not applicable
M (Distant metastasis):	Not applicable
Diagnostic Test Results:	Gram stain ~ Brown and Brenn stain,Negative; GMS ~ Grocott methenamine silver stain,Negative; Acid-fast bacteria ~ AFB ~ Ziehl-Neelsen acid fast,Negative; HSV ~ Herpes Simplex Virus,Negative; CD34 ~ HPCA ! by IHC,Positive
Storage:	Store frozen tissue sections at -80°C.
Stability:	All frozen tissue sections are stable for 1 year from date of purchase if stored at -80°C without repeated freeze/thaws.

Product images:

4x Image



20x Image