

Product datasheet for CS630849

Frozen Tissue Sections, Breast

Product data:

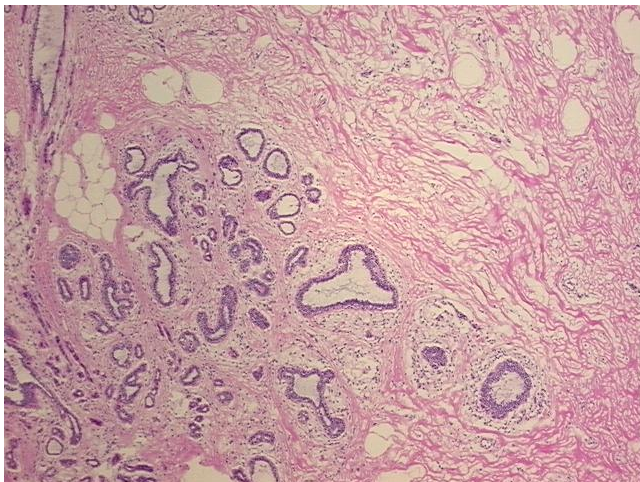
Product Type:	Frozen Sections
Disease State:	Normal
Diagnosis Category:	Normal
Tissue:	Breast
Frozen Sample ID:	FR00022777
Case ID:	CU0000006655
Tissue of Origin:	Breast
Site of Finding:	Breast
Appearance:	R
Sample Diagnosis (from Pathology Verification):	Within normal limits
Normal:	100%
Lesional:	0%
Tumor:	0%
Tumor Hypo/Acellular Stroma:	0%
Tumor Hypercellular Stroma:	0%
Necrosis:	0%
Pathology Verification notes from H&E review:	30% glandular epithelium, 70% stroma, 0% adipose tissue
CASE Diagnosis (from medical center path report):	Healing tissue changes
Age:	42
Gender:	Female
Diagnostic Test Results:	MSA ~ Muscle Specific Actin,Positive


[View online »](#)

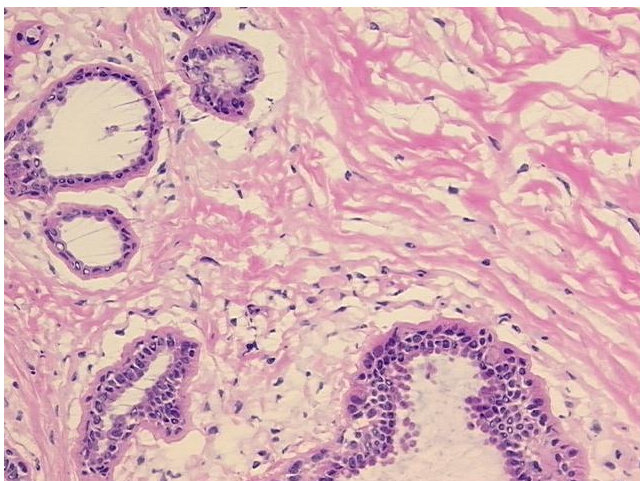
Storage: Store frozen tissue sections at -80°C.

Stability: All frozen tissue sections are stable for 1 year from date of purchase if stored at -80°C without repeated freeze/thaws.

Product images:



4x Image



20x Image