

## Product datasheet for **CS630710**

### Frozen Tissue Sections, Thyroid gland

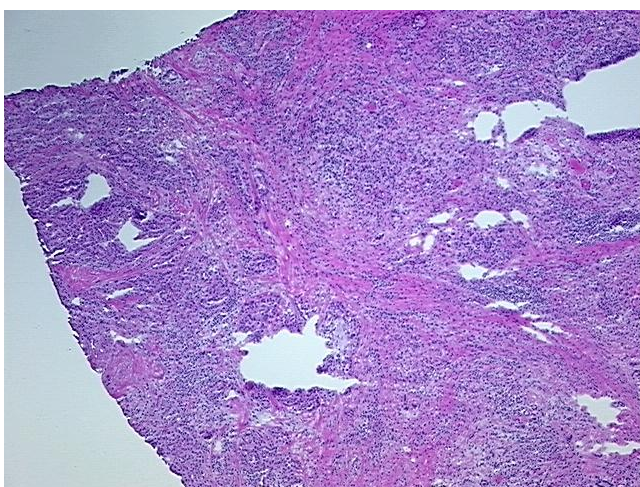
#### Product data:

|   |   |
|---|---|
| Product Type:                                     | Frozen Sections   |
| Disease State:                                    | Cancer  |
| Diagnosis Category:                               | Thyroid Cancer  |
| Tissue:   | Thyroid gland   |
| Frozen Sample ID:                                 | FR00022AFE  |
| Case ID:  | CU0000006642  |
| Tissue of Origin:                                 | Thyroid gland   |
| Site of Finding:                                  | Thyroid gland   |
| Appearance:                                       | T   |
| Sample Diagnosis (from Pathology Verification):   | Carcinoma of thyroid, papillary   |
| Normal:   | 0%  |
| Lesional:   | 90%   |
| Tumor:  | 10%   |
| Tumor Hypo/Acellular Stroma:                      | 0%  |
| Tumor Hypercellular Stroma:                       | 0%  |
| Necrosis:   | 0%  |
| Pathology Verification notes from H&E review:     | Lesion (90%): Thyroiditis, lymphocytic 100%; Non Tumor Structures: 60% Thyroid follicles, 30% Fibrous stroma, 10% Lymphoid stroma |
| CASE Diagnosis (from medical center path report): | Carcinoma of thyroid, papillary   |
| Age:  | 52  |
| Gender:   | Female  |
| Tumor Grade:                                      | Not Reported  |

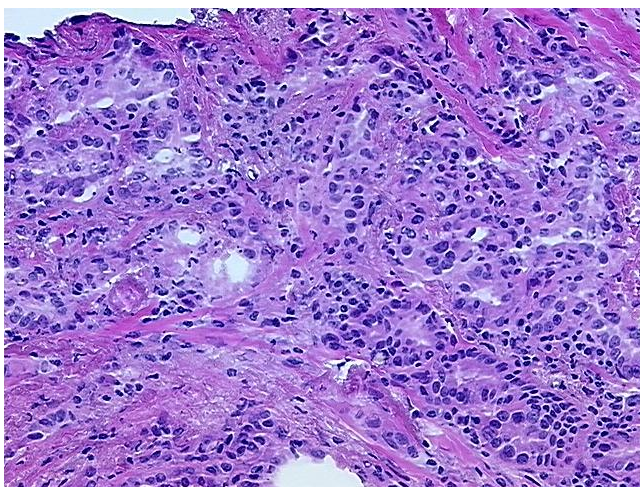


[View online »](#)

|                              |  |
|------------------------------|--|
| Minimum Stage Grouping:      | III  |
| T (Extent of Primary Tumor): | T3   |
| N (Lymph node metastasis):   | NX   |
| M (Distant metastasis):      | MX   |
| Storage:                     | Store frozen tissue sections at -80°C.   |
| Stability:                   | All frozen tissue sections are stable for 1 year from date of purchase if stored at -80°C without repeated freeze/thaws. |

**Product images:**

4x Image



20x Image