

Product datasheet for **CS630606**

Frozen Tissue Sections, Myeloid tissue

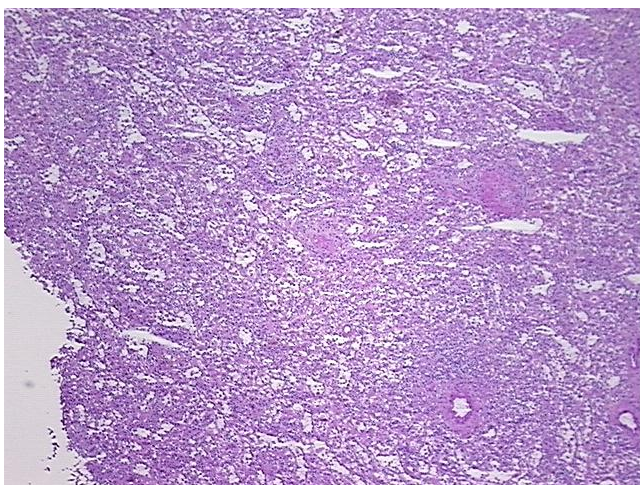
Product data:

Product Type:	Frozen Sections
Disease State:	Cancer
Diagnosis Category:	Leukemia
Tissue:	Lymphoid tissue
Frozen Sample ID:	FR00022503
Case ID:	CU0000006636
Tissue of Origin:	Myeloid tissue
Site of Finding:	Spleen
Appearance:	T
Sample Diagnosis (from Pathology Verification):	Leukemia, acute myeloid
Normal:	0%
Lesional:	0%
Tumor:	20%
Tumor Hypo/Acellular Stroma:	0%
Tumor Hypercellular Stroma:	80%
Necrosis:	0%
Pathology Verification notes from H&E review:	lesion: congestion and focal infarction
CASE Diagnosis (from medical center path report):	Leukemia, acute myeloid
Age:	72
Gender:	Male
Tumor Grade:	Not Reported

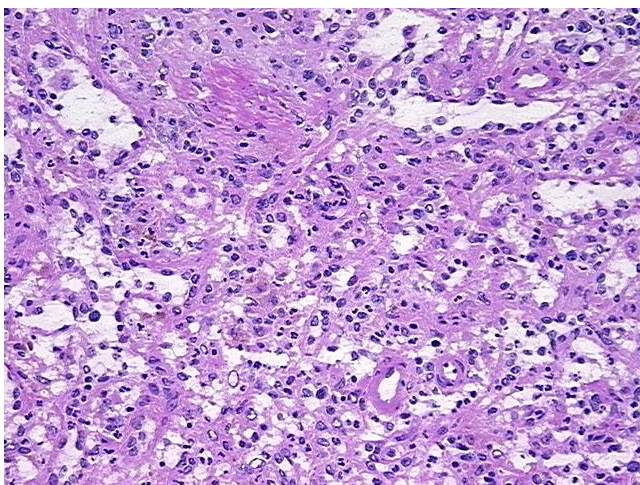


[View online »](#)

Minimum Stage Grouping:	Not Reported
T (Extent of Primary Tumor):	Not Reported
N (Lymph node metastasis):	Not Reported
M (Distant metastasis):	Not Reported
Storage:	Store frozen tissue sections at -80°C.
Stability:	All frozen tissue sections are stable for 1 year from date of purchase if stored at -80°C without repeated freeze/thaws.

Product images:

4x Image



20x Image