

Product datasheet for **CS630538**

Frozen Tissue Sections, Kidney

Product data:

| | |
|---|---|
| Product Type: | Frozen Sections |
| Disease State: | Cancer |
| Diagnosis Category: | Renal Cell Carcinoma |
| Tissue: | Kidney |
| Frozen Sample ID: | FR5B33EBE7 |
| Case ID: | CU0000006631 |
| Tissue of Origin: | Kidney |
| Site of Finding: | Kidney |
| Appearance: | Tumor |
| Sample Diagnosis (from Pathology Verification): | Carcinoma of kidney, renal cell, clear cell |
| Normal: | 0% |
| Lesional: | 0% |
| Tumor: | 35% |
| Tumor Hypo/Acellular Stroma: | 5% |
| Tumor Hypercellular Stroma: | 0% |
| Necrosis: | 60% |
| CASE Diagnosis (from medical center path report): | Carcinoma of kidney, renal cell, clear cell |
| Age: | 54 |
| Gender: | Male |
| Tumor Grade: | Fuhrman G3: Nuclei very irregular |
| Minimum Stage Grouping: | I |



[View online »](#)

T (Extent of Primary Tumor): pT1

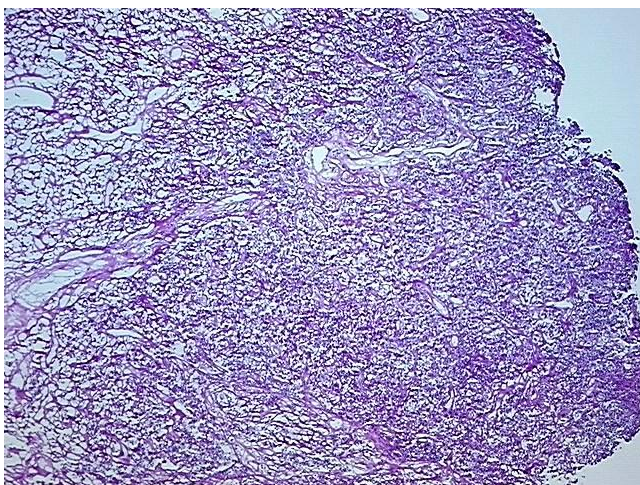
N (Lymph node metastasis): pNX

M (Distant metastasis): pMX

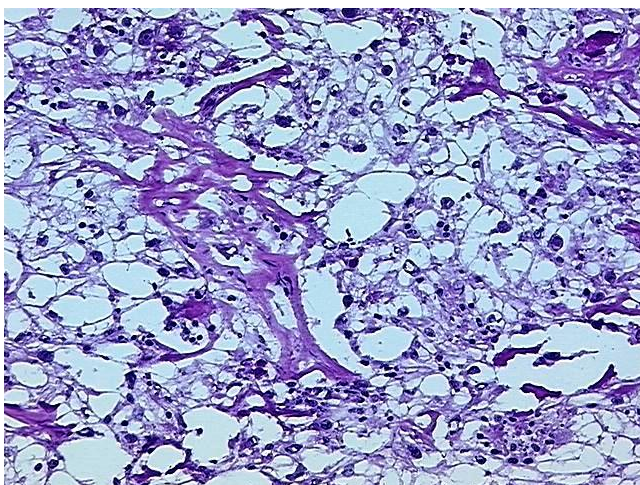
Storage: Store frozen tissue sections at -80°C.

Stability: All frozen tissue sections are stable for 1 year from date of purchase if stored at -80°C without repeated freeze/thaws.

Product images:



4x Image



20x Image