

Product datasheet for **CS630085**

Frozen Tissue Sections, Endometrium

Product data:

Product Type:	Frozen Sections
Disease State:	Cancer
Diagnosis Category:	Sarcoma
Tissue:	Endometrium
Frozen Sample ID:	FR0002351C
Case ID:	CU0000006609
Tissue of Origin:	Endometrium
Site of Finding:	Colon
Appearance:	T
Sample Diagnosis (from Pathology Verification):	Sarcoma, endometrial stromal, metastatic
Normal:	0%
Lesional:	0%
Tumor:	98%
Tumor Hypo/Acellular Stroma:	2%
Tumor Hypercellular Stroma:	0%
Necrosis:	0%
CASE Diagnosis (from medical center path report):	Sarcoma, stromal, metastatic
Age:	62
Gender:	Female
Tumor Grade:	Other Histologic Grade
Minimum Stage Grouping:	IV



[View online »](#)

T (Extent of Primary Tumor): TX

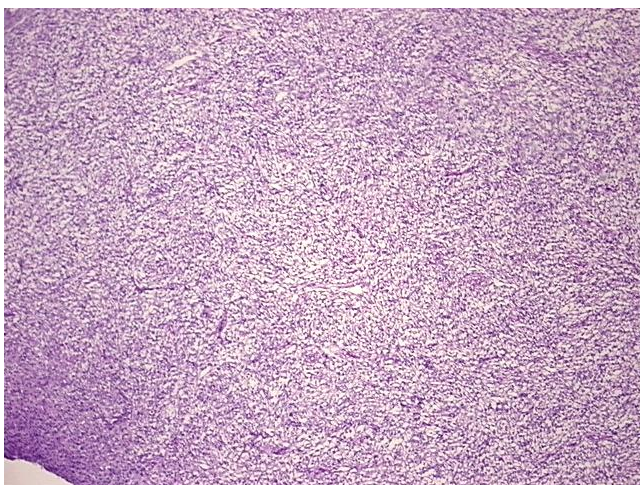
N (Lymph node metastasis): NX

M (Distant metastasis): M1

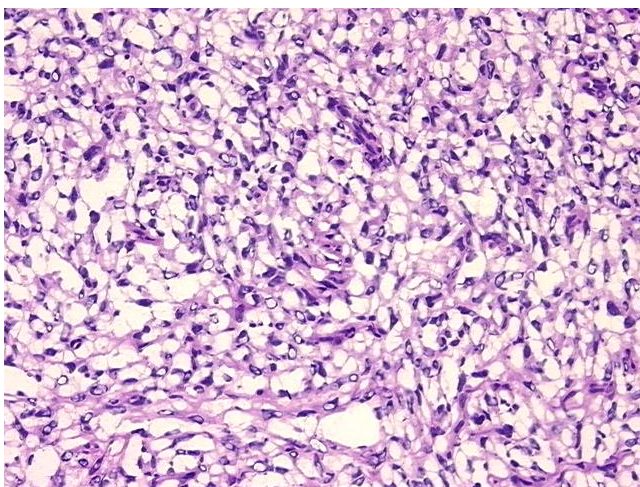
Storage: Store frozen tissue sections at -80°C.

Stability: All frozen tissue sections are stable for 1 year from date of purchase if stored at -80°C without repeated freeze/thaws.

Product images:



4x Image



20x Image