

Product datasheet for **CS630062**

Frozen Tissue Sections, Kidney

Product data:

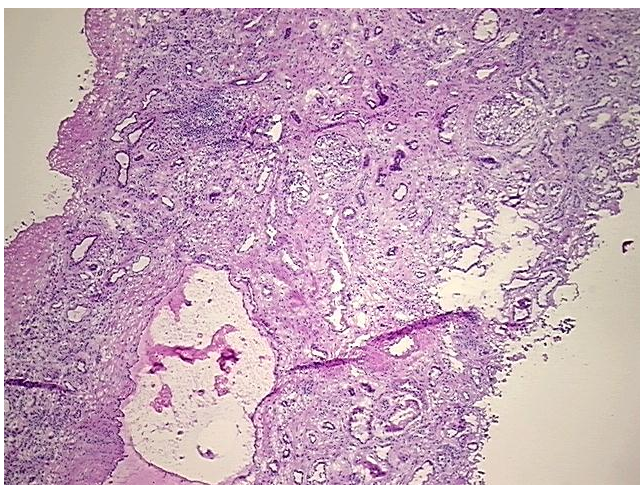
| | |
|---|--|
| Product Type: | Frozen Sections |
| Disease State: | Other Disease |
| Diagnosis Category: | Polycystic Kidney Disease |
| Tissue: | Kidney |
| Frozen Sample ID: | FR00023591 |
| Case ID: | CU0000006608 |
| Tissue of Origin: | Kidney |
| Site of Finding: | Kidney |
| Appearance: | L |
| Sample Diagnosis (from Pathology Verification): | Polycystic kidney disease |
| Normal: | 0% |
| Lesional: | 100% |
| Tumor: | 0% |
| Tumor Hypo/Acellular Stroma: | 0% |
| Tumor Hypercellular Stroma: | 0% |
| Necrosis: | 0% |
| Pathology Verification notes from H&E review: | Inflammation: Moderate Lymphoid infiltrate |
| CASE Diagnosis (from medical center path report): | Polycystic kidney disease |
| Age: | 40 |
| Gender: | Female |
| Storage: | Store frozen tissue sections at -80°C. |



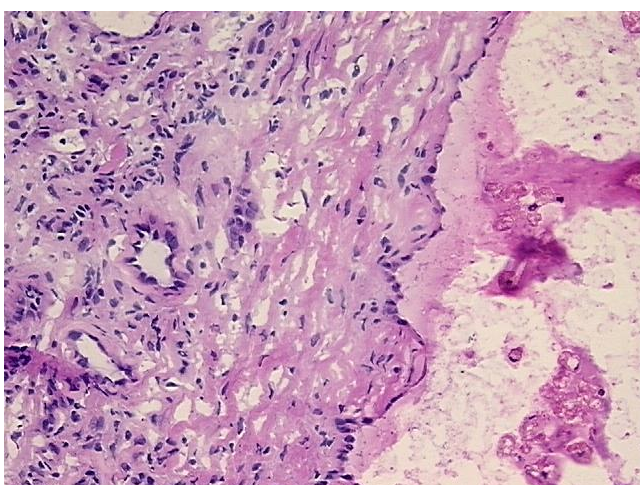
[View online »](#)

Stability: All frozen tissue sections are stable for 1 year from date of purchase if stored at -80°C without repeated freeze/thaws.

Product images:



4x Image



20x Image