

## Product datasheet for **CS629815**

### Frozen Tissue Sections, Brain

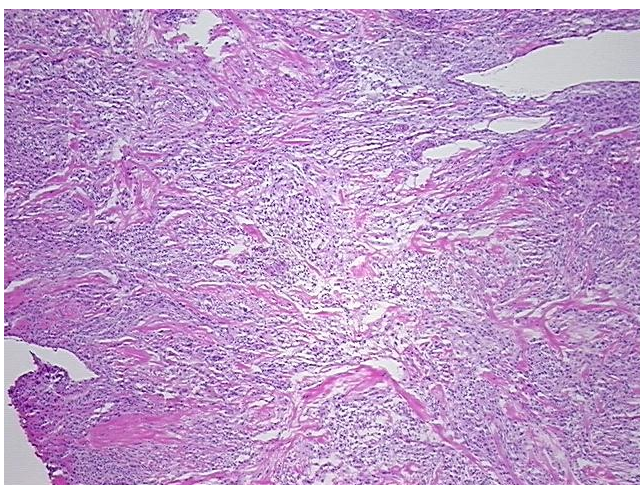
#### Product data:

Product Type:	Frozen Sections
Disease State:	Other Disease
Diagnosis Category:	Meningioma
Tissue:	Brain
Frozen Sample ID:	FR0001DBE5
Case ID:	CU00000006579
Tissue of Origin:	Brain
Site of Finding:	Brain
Appearance:	T
Sample Diagnosis (from Pathology Verification):	Meningioma, atypical
Normal:	0%
Lesional:	0%
Tumor:	90%
Tumor Hypo/Acellular Stroma:	0%
Tumor Hypercellular Stroma:	10%
Necrosis:	0%
CASE Diagnosis (from medical center path report):	Meningioma, atypical
Age:	67
Gender:	Male
Tumor Grade:	WHO Grade II
Minimum Stage Grouping:	Not Reported

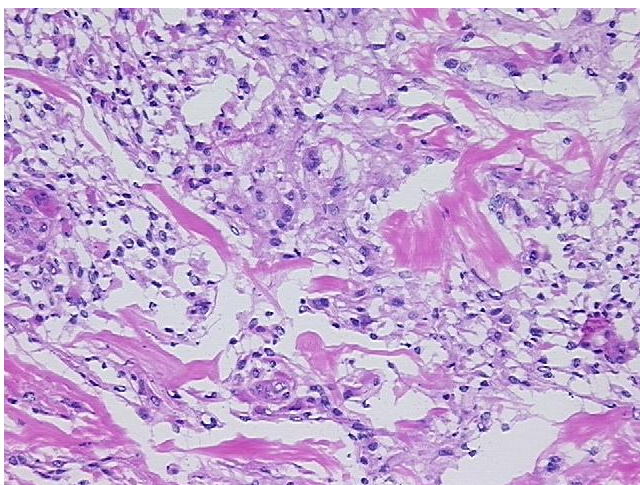

[View online »](#)

<b>T (Extent of Primary Tumor):</b>	Not Reported
<b>N (Lymph node metastasis):</b>	Not Reported
<b>M (Distant metastasis):</b>	Not Reported
<b>Diagnostic Test Results:</b>	Ki67 ~ MIB1 ! by IHC,Positive
<b>Storage:</b>	Store frozen tissue sections at -80°C.
<b>Stability:</b>	All frozen tissue sections are stable for 1 year from date of purchase if stored at -80°C without repeated freeze/thaws.

### Product images:



4x Image



20x Image