

Product datasheet for **CS629801**

Frozen Tissue Sections, Soft tissue

Product data:

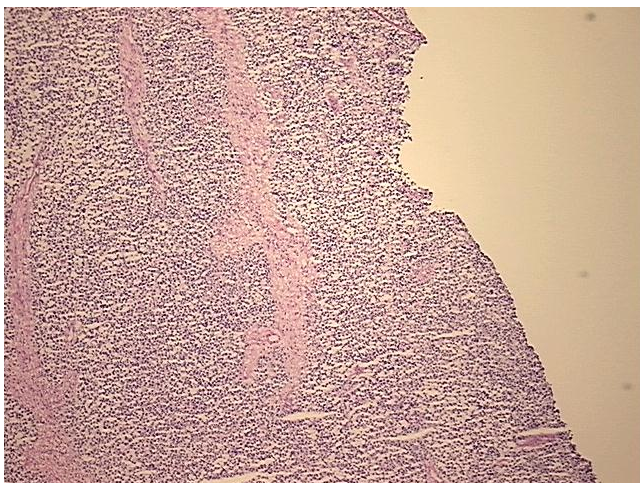
Product Type:	Frozen Sections
Disease State:	Cancer
Diagnosis Category:	Sarcoma
Tissue:	Soft tissue
Frozen Sample ID:	FR0001DBB8
Case ID:	CU0000006576
Tissue of Origin:	Soft tissue
Site of Finding:	Uterus
Appearance:	T
Sample Diagnosis (from Pathology Verification):	Rhabdomyosarcoma of uterus
Normal:	0%
Lesional:	0%
Tumor:	90%
Tumor Hypo/Acellular Stroma:	0%
Tumor Hypercellular Stroma:	8%
Necrosis:	2%
Pathology Verification notes from H&E review:	the histologic findings and the immunohistochemistry are consistent with rhabdomyosarcoma, alveolar subtype.
CASE Diagnosis (from medical center path report):	Rhabdomyosarcoma of uterus
Age:	66
Gender:	Female
Tumor Grade:	AJCC G4: Undifferentiated



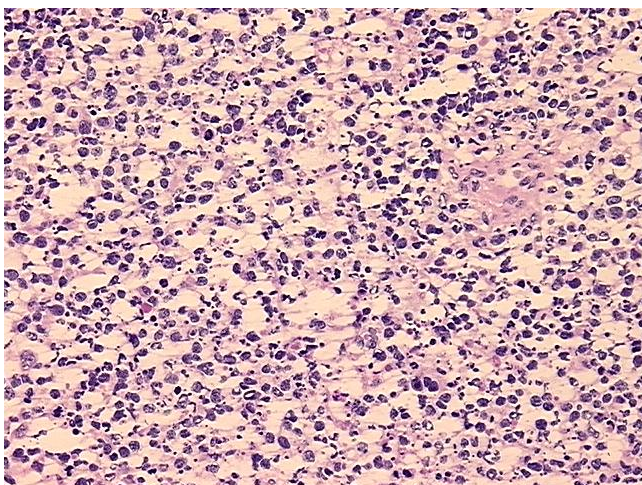
[View online »](#)

Minimum Stage Grouping:	III
T (Extent of Primary Tumor):	T3
N (Lymph node metastasis):	N0
M (Distant metastasis):	MX
Diagnostic Test Results:	Myogenin ~ Myf4 ! by IHC,Positive; Smooth muscle actin ~ SMA ~ Alpha-SMA ! by IHC,Negative; Progesterone receptor ~ PR ! by IHC,Negative; Estrogen receptor ~ ER ! by IHC,Negative; Desmin ! by IHC,Positive; Cytokeratin CAM5.2 ~ CAM5.2 ! by IHC
Storage:	Store frozen tissue sections at -80°C.
Stability:	All frozen tissue sections are stable for 1 year from date of purchase if stored at -80°C without repeated freeze/thaws.

Product images:



4x Image



20x Image