

Product datasheet for **CS629774**

Frozen Tissue Sections, Blood vessel

Product data:

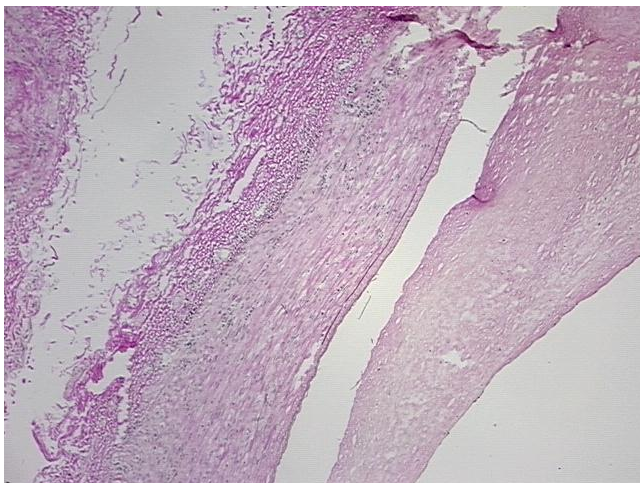
Product Type:	Frozen Sections
Disease State:	Other Disease
Diagnosis Category:	Atherosclerosis
Tissue:	Blood vessel
Frozen Sample ID:	FR0001DAF4
Case ID:	CU0000006572
Tissue of Origin:	Blood vessel
Site of Finding:	Blood vessel
Appearance:	L
Sample Diagnosis (from Pathology Verification):	Atherosclerotic plaque
Normal:	10%
Lesional:	90%
Tumor:	0%
Tumor Hypo/Acellular Stroma:	0%
Tumor Hypercellular Stroma:	0%
Necrosis:	0%
Pathology Verification notes from H&E review:	normal: 80% muscle, 20% nerve; lesion: 20% vessel, 80% atherosclerotic debris
CASE Diagnosis (from medical center path report):	Atherosclerosis
Age:	68
Gender:	Male
Storage:	Store frozen tissue sections at -80°C.



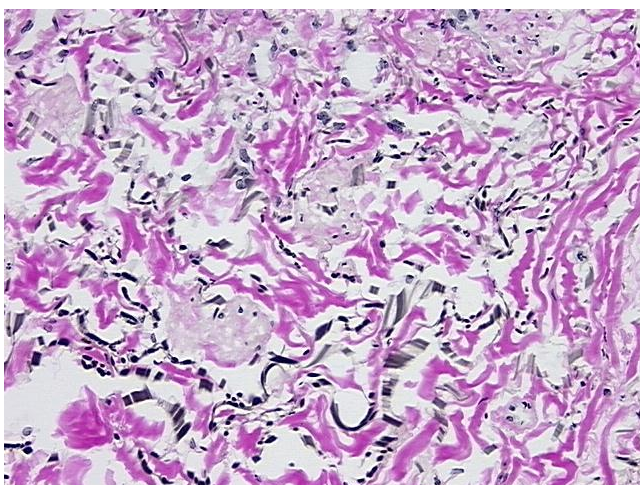
[View online »](#)

Stability: All frozen tissue sections are stable for 1 year from date of purchase if stored at -80°C without repeated freeze/thaws.

Product images:



4x Image



20x Image