

Product datasheet for CS629725

Frozen Tissue Sections, Lymphoid tissue

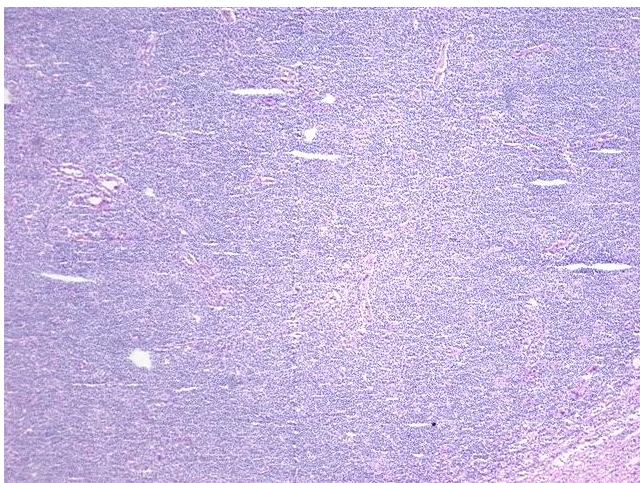
Product data:

| | |
|---|---|
| Product Type: | Frozen Sections |
| Disease State: | Cancer |
| Diagnosis Category: | Lymphoma |
| Tissue: | Lymphoid tissue |
| Frozen Sample ID: | FR0001DA67 |
| Case ID: | CU0000006565 |
| Tissue of Origin: | Lymphoid tissue |
| Site of Finding: | Lymph node |
| Appearance: | T |
| Sample Diagnosis (from Pathology Verification): | Lymphoma, Hodgkin, nodular lymphocyte predominant |
| Normal: | 90% |
| Lesional: | 0% |
| Tumor: | 5% |
| Tumor Hypo/Acellular Stroma: | 5% |
| Tumor Hypercellular Stroma: | 0% |
| Necrosis: | 0% |
| Pathology Verification notes from H&E review: | normal : reactive B- and T-lymphocytes |
| CASE Diagnosis (from medical center path report): | Lymphoma, Hodgkin, nodular lymphocyte predominant |
| Age: | 48 |
| Gender: | Female |
| Tumor Grade: | Not Reported |

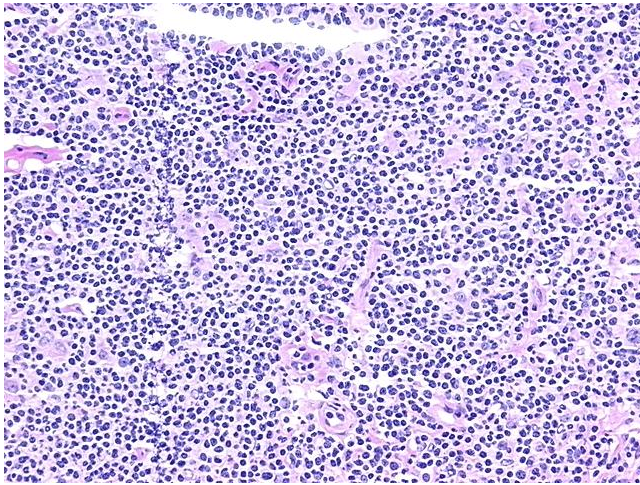


[View online »](#)

| | |
|------------------------------|---|
| Minimum Stage Grouping: | I |
| T (Extent of Primary Tumor): | Not applicable |
| N (Lymph node metastasis): | Not applicable |
| M (Distant metastasis): | Not applicable |
| Diagnostic Test Results: | CD227 ~ MUC1 ~ EMA ~ CA15-3 ! by IHC,Positive; Kappa light chain ! by IHC,Positive; EBV latent membrane protein 1 ~ LMP1 ! by IHC,Negative; Lambda light chain ! by IHC,Positive; CD57 ~ Leu7 ~ HNK1 ~ Natural Killer Cell Marker ! by IHC,Positi |
| Storage: | Store frozen tissue sections at -80°C. |
| Stability: | All frozen tissue sections are stable for 1 year from date of purchase if stored at -80°C without repeated freeze/thaws. |

Product images:

4x Image



20x Image