

Product datasheet for CS629625

Frozen Tissue Sections, Lymphoid tissue

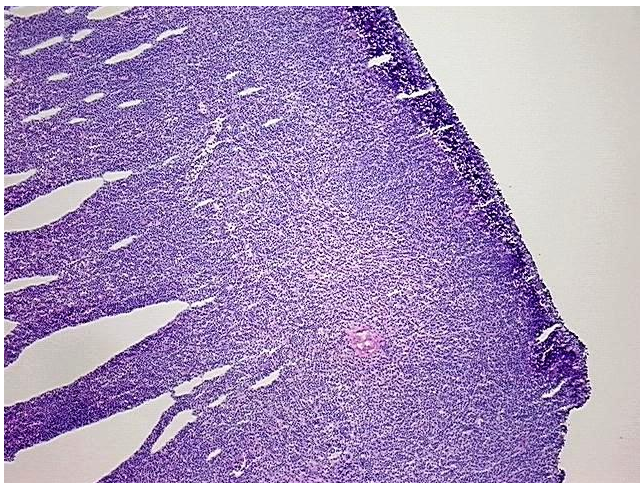
Product data:

Product Type:	Frozen Sections
Disease State:	Cancer
Diagnosis Category:	Lymphoma
Tissue:	Lymphoid tissue
Frozen Sample ID:	FR0001D84F
Case ID:	CU0000006554
Tissue of Origin:	Lymphoid tissue
Site of Finding:	Spleen
Appearance:	Tumor
Sample Diagnosis (from Pathology Verification):	Lymphoma, mantle cell
Normal:	30%
Lesional:	30%
Tumor:	20%
Tumor Hypo/Acellular Stroma:	10%
Tumor Hypercellular Stroma:	10%
Necrosis:	0%
Pathology Verification notes from H&E review:	Lesion: 30% splenic plaque present; Tumor: 20%, while the immunophenotype and splenic morphology are more consistent with splenic marginal zone lymphoma/splenic lymphoma with villous lymphocytes, the diagnosis favors mantle cell lymphoma (due to the stron
CASE Diagnosis (from medical center path report):	Lymphoma, mantle cell
Age:	52
Gender:	Male

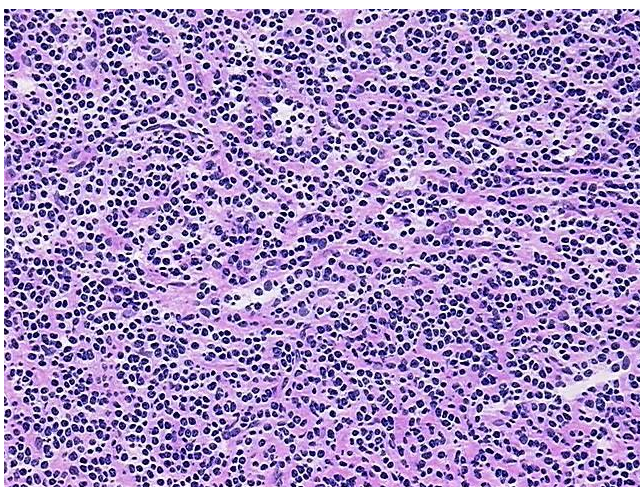


[View online »](#)

Tumor Grade:	Not Reported
Minimum Stage Grouping:	IIE
Storage:	Store frozen tissue sections at -80°C.
Stability:	All frozen tissue sections are stable for 1 year from date of purchase if stored at -80°C without repeated freeze/thaws.

Product images:

4x Image



20x Image