

Product datasheet for CS629623

Frozen Tissue Sections, Lymphoid tissue

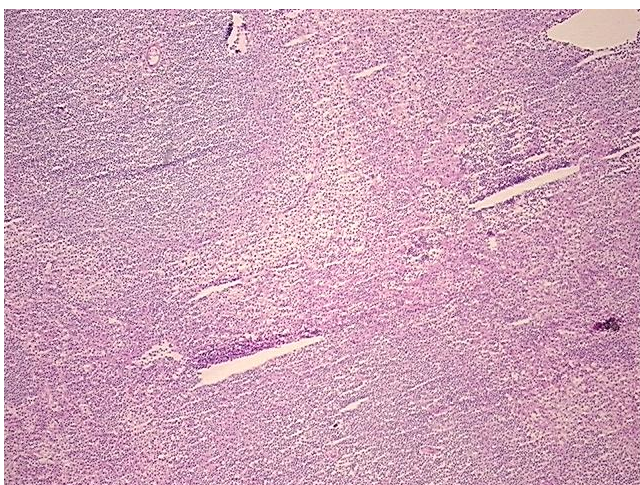
Product data:

Product Type:	Frozen Sections
Disease State:	Cancer
Diagnosis Category:	Lymphoma
Tissue:	Lymphoid tissue
Frozen Sample ID:	FR0001D83D
Case ID:	CU0000006553
Tissue of Origin:	Lymphoid tissue
Site of Finding:	Spleen
Appearance:	T
Sample Diagnosis (from Pathology Verification):	Lymphoma, marginal zone B-cell, splenic
Normal:	35%
Lesional:	0%
Tumor:	65%
Tumor Hypo/Acellular Stroma:	0%
Tumor Hypercellular Stroma:	0%
Necrosis:	0%
Pathology Verification notes from H&E review:	Splenic marginal zone B-cell lymphoma (flow immunophenotyping done on peripheral blood shows monoclonal B-cell population)
CASE Diagnosis (from medical center path report):	Lymphoma, marginal zone B-cell, splenic
Age:	38
Gender:	Female
Tumor Grade:	Not Reported

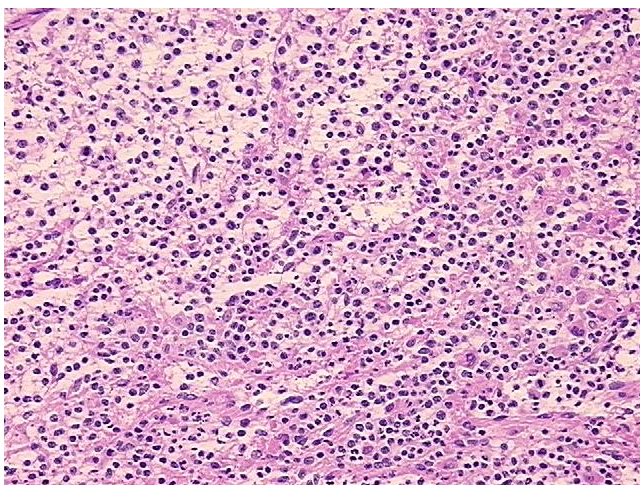


[View online »](#)

Minimum Stage Grouping:	IE
T (Extent of Primary Tumor):	Not applicable
N (Lymph node metastasis):	Not applicable
M (Distant metastasis):	Not applicable
Diagnostic Test Results:	CD11c ~ Integrin alpha X ~ LeuM5 ! by IHC,Positive; Kappa light chain ! by IHC,Positive; IgM ~ Mu-heavy chain ! by IHC,Positive; IgD ~ delta-Heavy Chain,Positive; CD5 ~ Leu1 ! by IHC,Negative; CD10 ~ CALLA ~ Common ALL antigen ! by IHC,Negat
Storage:	Store frozen tissue sections at -80°C.
Stability:	All frozen tissue sections are stable for 1 year from date of purchase if stored at -80°C without repeated freeze/thaws.

Product images:

4x Image



20x Image