

## Product datasheet for CS629597

### Frozen Tissue Sections, Ovary: left

#### Product data:

Product Type:	Frozen Sections
Disease State:	Cancer
Diagnosis Category:	Ovarian Cancer
Tissue:	Ovary
Frozen Sample ID:	FR0001D7E8
Case ID:	CU0000006546
Tissue of Origin:	Ovary: left
Site of Finding:	Ovary: left
Appearance:	Tumor
Sample Diagnosis (from Pathology Verification):	Adenocarcinoma of ovary, clear cell
Normal:	0%
Lesional:	0%
Tumor:	20%
Tumor Hypo/Acellular Stroma:	0%
Tumor Hypercellular Stroma:	10%
Necrosis:	70%
CASE Diagnosis (from medical center path report):	Adenocarcinoma of ovary, clear cell
Age:	48
Gender:	Female
Tumor Grade:	Not Reported
Minimum Stage Grouping:	IA



[View online »](#)

T (Extent of Primary Tumor): pT1a

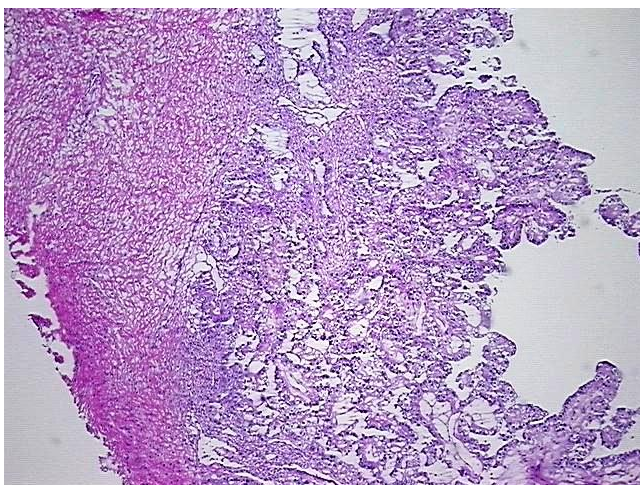
N (Lymph node metastasis): pN0

M (Distant metastasis): pMX

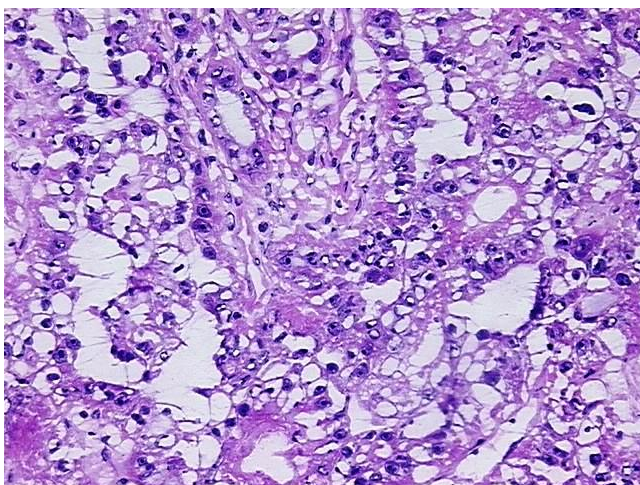
Storage: Store frozen tissue sections at -80°C.

Stability: All frozen tissue sections are stable for 1 year from date of purchase if stored at -80°C without repeated freeze/thaws.

### Product images:



4x Image



20x Image