

## Product datasheet for **CS629550**

### Frozen Tissue Sections, Breast

#### Product data:

<b>Product Type:</b>	Frozen Sections
<b>Disease State:</b>	Other Disease
<b>Diagnosis Category:</b>	Benign Tumors
<b>Tissue:</b>	Breast
<b>Frozen Sample ID:</b>	FR0001D786
<b>Case ID:</b>	CU00000006542
<b>Tissue of Origin:</b>	Breast
<b>Site of Finding:</b>	Breast
<b>Appearance:</b>	T
<b>Sample Diagnosis (from Pathology Verification):</b>	Fibroadenoma of breast
<b>Normal:</b>	0%
<b>Lesional:</b>	0%
<b>Tumor:</b>	10%
<b>Tumor Hypo/Acellular Stroma:</b>	0%
<b>Tumor Hypercellular Stroma:</b>	90%
<b>Necrosis:</b>	0%
<b>Pathology Verification notes from H&amp;E review:</b>	tumor stroma contains loose cellular collagenous connective tissue



**CASE Diagnosis (from medical center path report):** Fibroadenoma of breast

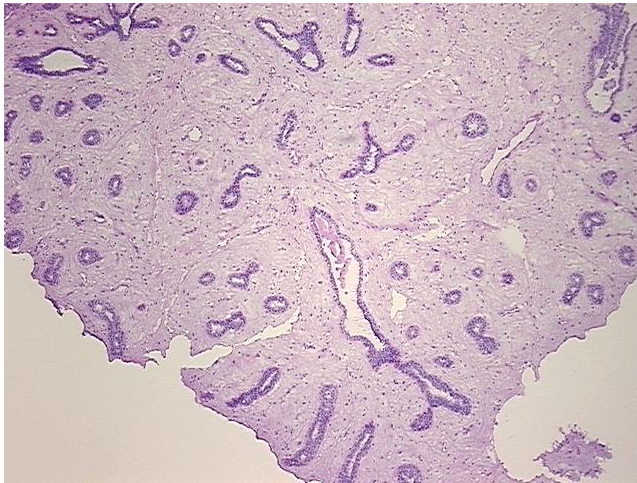
**Age:** 60

**Gender:** Female

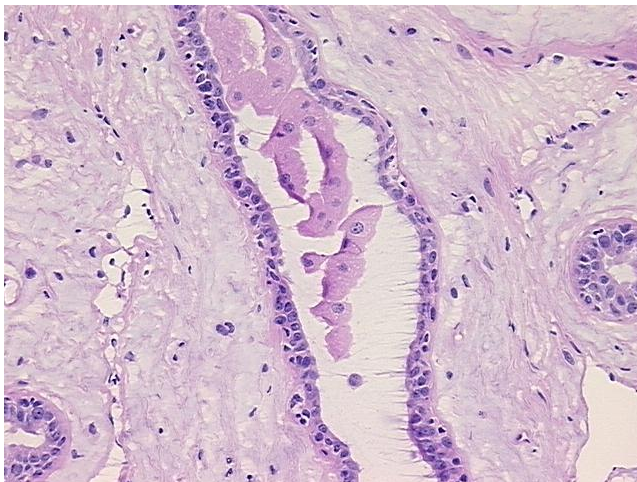
**Storage:** Store frozen tissue sections at  $-80^{\circ}\text{C}$ .

**Stability:** All frozen tissue sections are stable for 1 year from date of purchase if stored at  $-80^{\circ}\text{C}$  without repeated freeze/thaws.

**Product images:**



4x Image



20x Image