

Product datasheet for **CS629435**

Frozen Tissue Sections, Breast

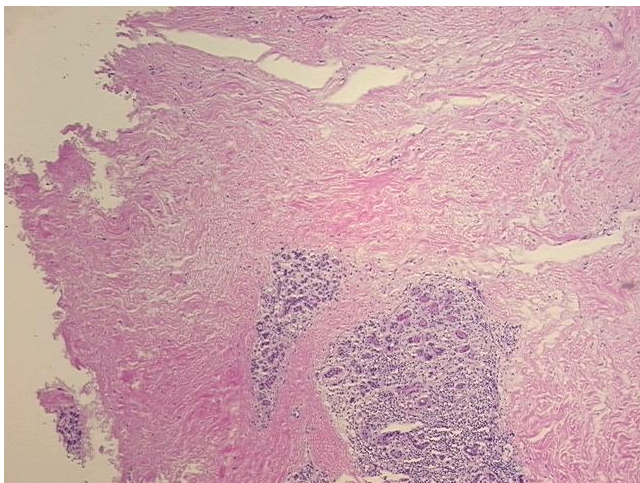
Product data:

Product Type:	Frozen Sections
Disease State:	Normal
Diagnosis Category:	Normal
Tissue:	Breast
Frozen Sample ID:	FR00025051
Case ID:	CU0000006519
Tissue of Origin:	Breast
Site of Finding:	Breast
Appearance:	R
Sample Diagnosis (from Pathology Verification):	Within normal limits
Normal:	100%
Lesional:	0%
Tumor:	0%
Tumor Hypo/Acellular Stroma:	0%
Tumor Hypercellular Stroma:	0%
Necrosis:	0%
Pathology Verification notes from H&E review:	15% glandular epithelium, 85% stroma; focal lobular lymphoid infiltrate
CASE Diagnosis (from medical center path report):	Fibrosis
Age:	62
Gender:	Female
Storage:	Store frozen tissue sections at -80°C.

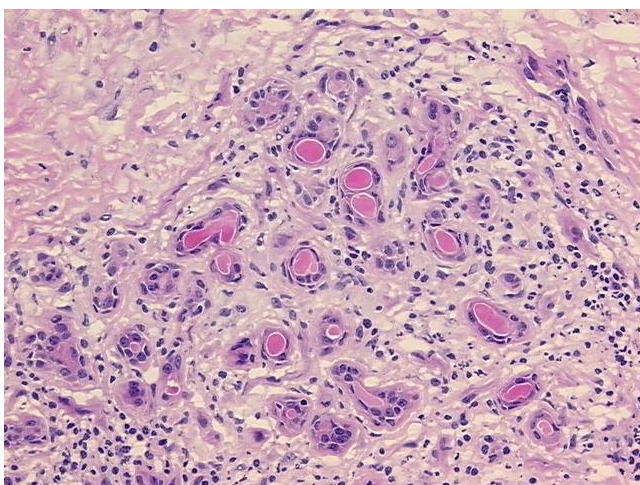

[View online »](#)

Stability: All frozen tissue sections are stable for 1 year from date of purchase if stored at -80°C without repeated freeze/thaws.

Product images:



4x Image



20x Image