

## Product datasheet for **CS629234**

### Frozen Tissue Sections, Adrenal gland

#### Product data:

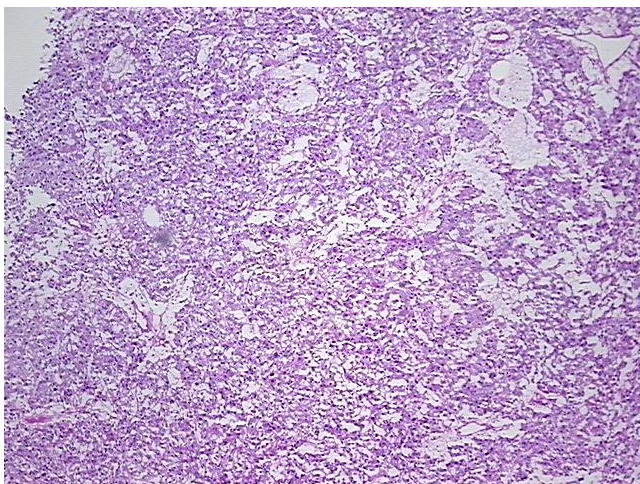
Product Type:	Frozen Sections
Disease State:	Other Disease
Diagnosis Category:	Benign Tumors
Tissue:	Adrenal gland
Frozen Sample ID:	FR00024EEA
Case ID:	CU0000006501
Tissue of Origin:	Adrenal gland
Site of Finding:	Adrenal gland
Appearance:	T
Sample Diagnosis (from Pathology Verification):	Pheochromocytoma
Normal:	0%
Lesional:	0%
Tumor:	90%
Tumor Hypo/Acellular Stroma:	0%
Tumor Hypercellular Stroma:	10%
Necrosis:	0%
CASE Diagnosis (from medical center path report):	Pheochromocytoma
Age:	51
Gender:	Female
Tumor Grade:	Not Reported
Minimum Stage Grouping:	Not Reported



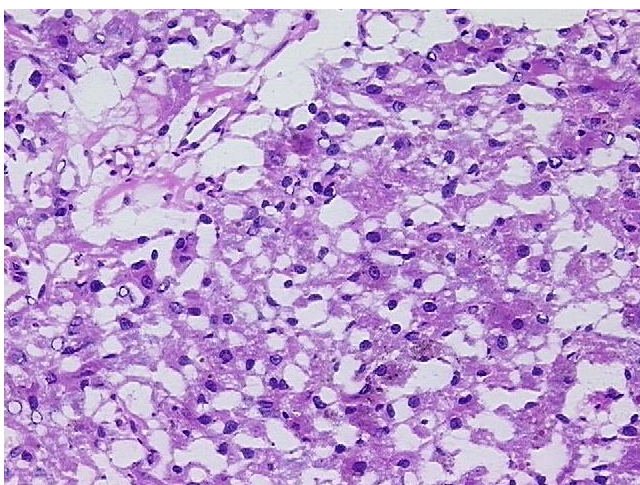
[View online »](#)

T (Extent of Primary Tumor):	Not Reported
N (Lymph node metastasis):	Not Reported
M (Distant metastasis):	Not Reported
Diagnostic Test Results:	Cytokeratin (Pan) ~ Keratin, Pan ! by IHC,Negative; Neuron specific enolase ~ NSE ! by IHC,Positive; Vimentin ~ VIM ! by IHC,Positive; S100 protein,Positive, weak; Chromogranin A ~ Parathyroid secretory protein 1 ! by IHC,Positive
Storage:	Store frozen tissue sections at -80°C.
Stability:	All frozen tissue sections are stable for 1 year from date of purchase if stored at -80°C without repeated freeze/thaws.

### Product images:



4x Image



20x Image