

Product datasheet for **CS629154**

Frozen Tissue Sections, Spleen

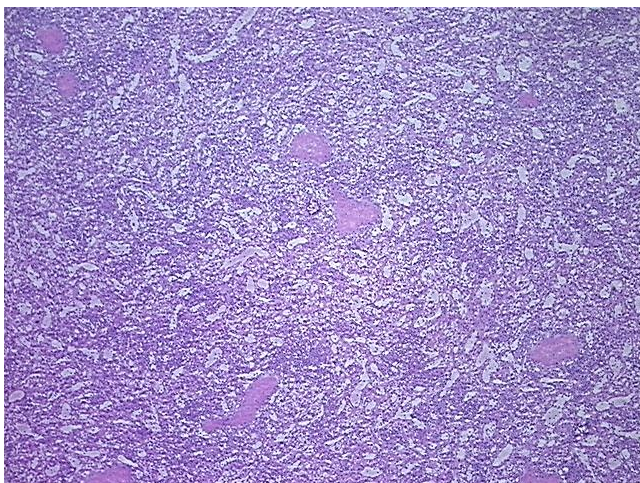
Product data:

Product Type:	Frozen Sections
Disease State:	Normal
Diagnosis Category:	Normal
Tissue:	Spleen
Frozen Sample ID:	FR00024E06
Case ID:	CU0000006488
Tissue of Origin:	Spleen
Site of Finding:	Spleen
Appearance:	R
Sample Diagnosis (from Pathology Verification):	Within normal limits
Normal:	100%
Lesional:	0%
Tumor:	0%
Tumor Hypo/Acellular Stroma:	0%
Tumor Hypercellular Stroma:	0%
Necrosis:	0%
Pathology Verification notes from H&E review:	Non Tumor Structures: 95% Red pulp, 5% White pulp; Other Features/Comments: Sample area: 5 mm x 5 mm
CASE Diagnosis (from medical center path report):	Carcinoma of pancreas, acinar cell
Age:	43
Gender:	Male
Tumor Grade:	Not Reported

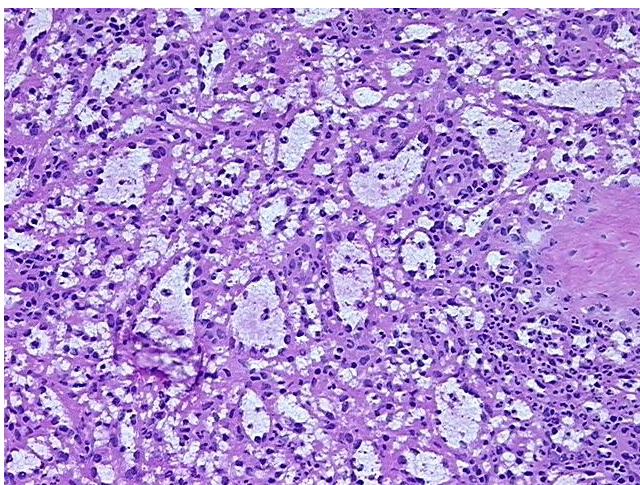


[View online »](#)

Minimum Stage Grouping:	IB
T (Extent of Primary Tumor):	T2
N (Lymph node metastasis):	N0
M (Distant metastasis):	MX
Diagnostic Test Results:	Neuron specific enolase ~ NSE ! by IHC,Negative; CD56 ~ NCAM ~ NKH1 ! by IHC,Negative; Synaptophysin ~ SYN ! by IHC,Negative; Chromogranin A ~ Parathyroid secretory protein 1 ! by IHC,Negative; Cytokeratin 7 ~ CK7 ! by IHC,Positive; Cytokerati
Storage:	Store frozen tissue sections at -80°C.
Stability:	All frozen tissue sections are stable for 1 year from date of purchase if stored at -80°C without repeated freeze/thaws.

Product images:

4x Image



20x Image